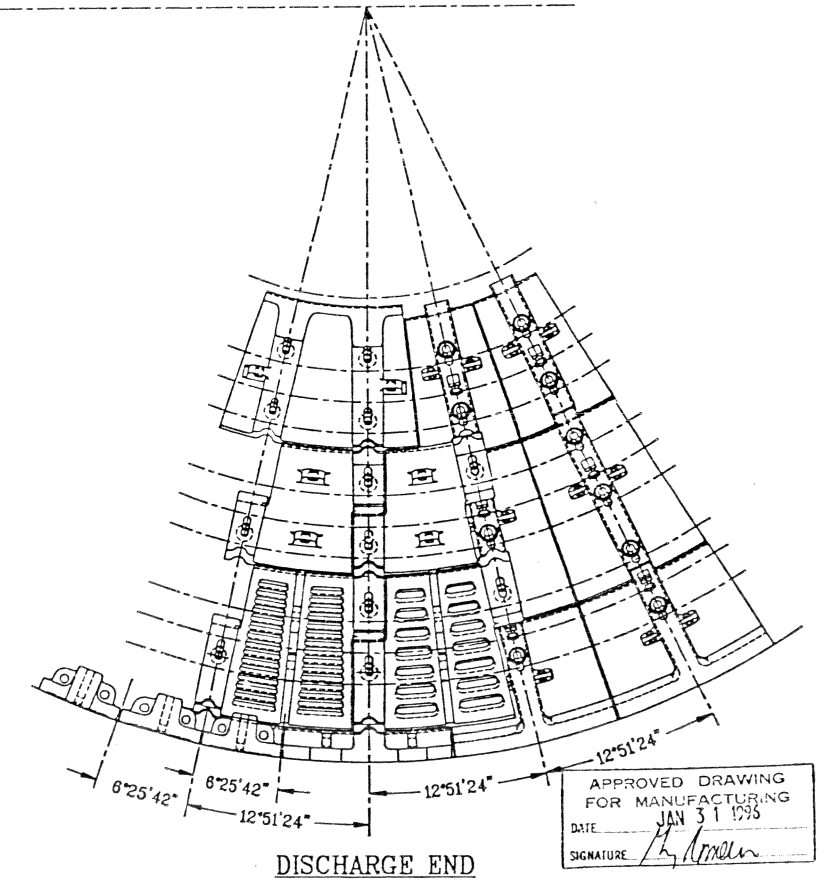
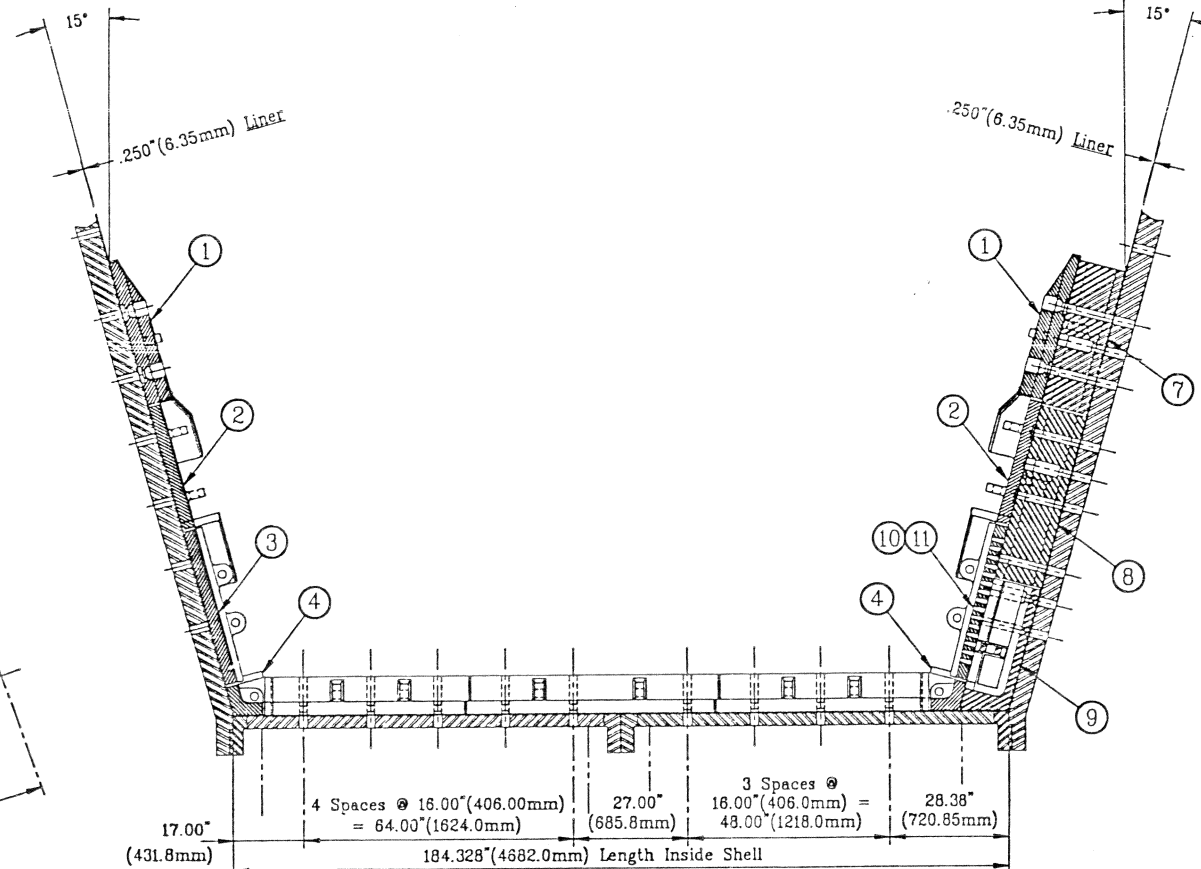
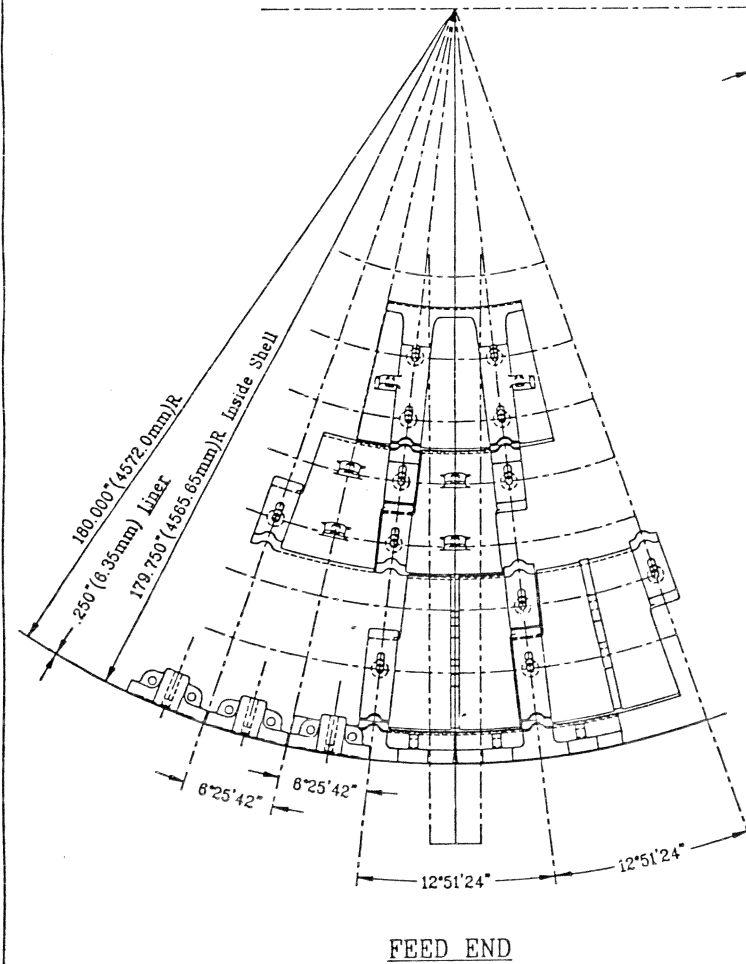


Centre Line of Mill



APPROVED DRAWING FOR MANUFACTURING
DATE JAN 31 1995
SIGNATURE *[Signature]*

Item	Description	Part No.	Quantity	Pl./Pa.	Material
11	D.E. Outer Pebble Port	1655-10-01	28/End		
10	D.E. Outer Grate	1655-5-01	28/End		
Items #10 & #11 to be Combined as Recommended by FULLER CO.					
9	D.E. Outer Pulp Lifter	1655-9-01	28/End		
8	D.E. Centre Pulp Lifter	1655-8-02	28/End		
7	D.E. Inner Pulp Lifter	1655-8-01	28/End		
6	Shell Liner, Middle	1655-7-02	56/Set		
5	Shell Liner, Ends	1655-7-01	112/Set		
4	Filler Ring Segments	1655-6-01	28/End		
3	F.E. Outer End Liner	1655-4-01	28/End		
2	Centre End Liner	1655-3-01	28/End		
1	Inner End Liner	1655-2-01	14/End		

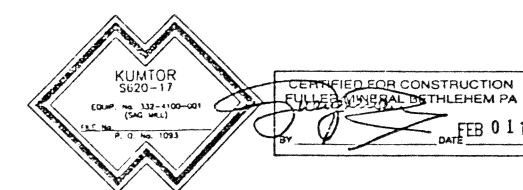
Norsteel 8Y
325-375 BHN
(Cr Moly Steel)

NOTE :- For Manufacturing, Use Inches & Inch Tol.

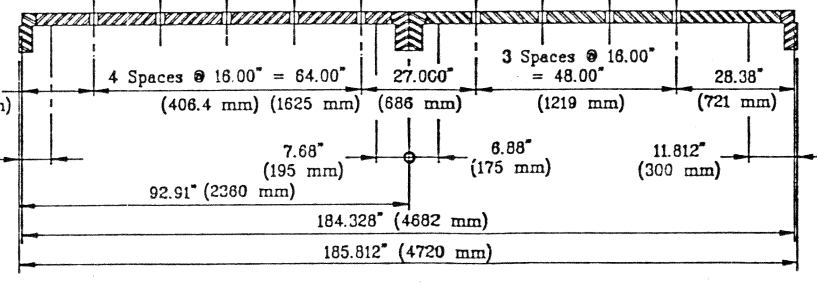
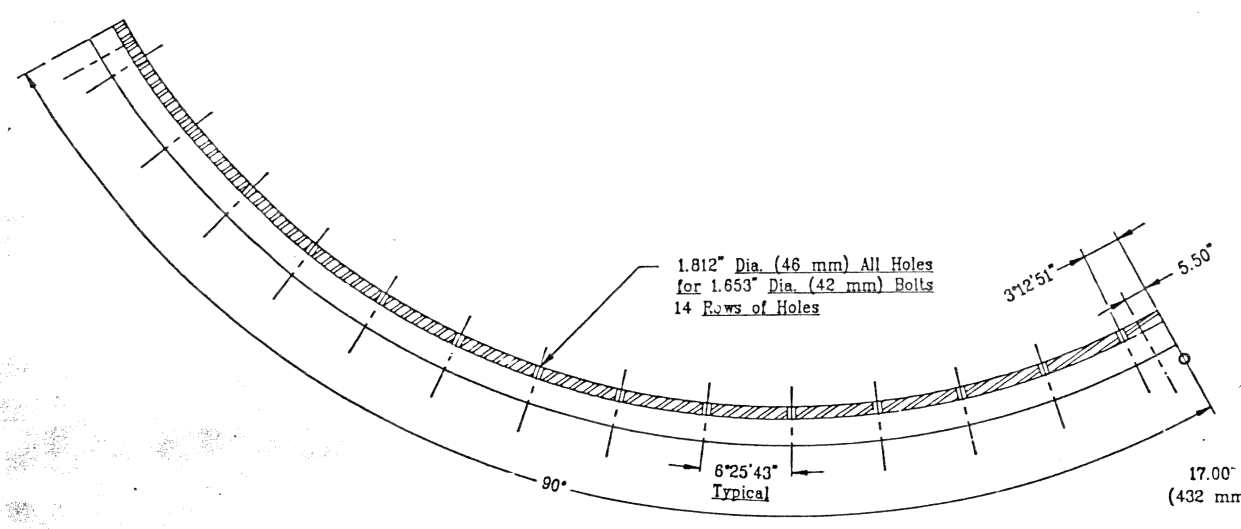
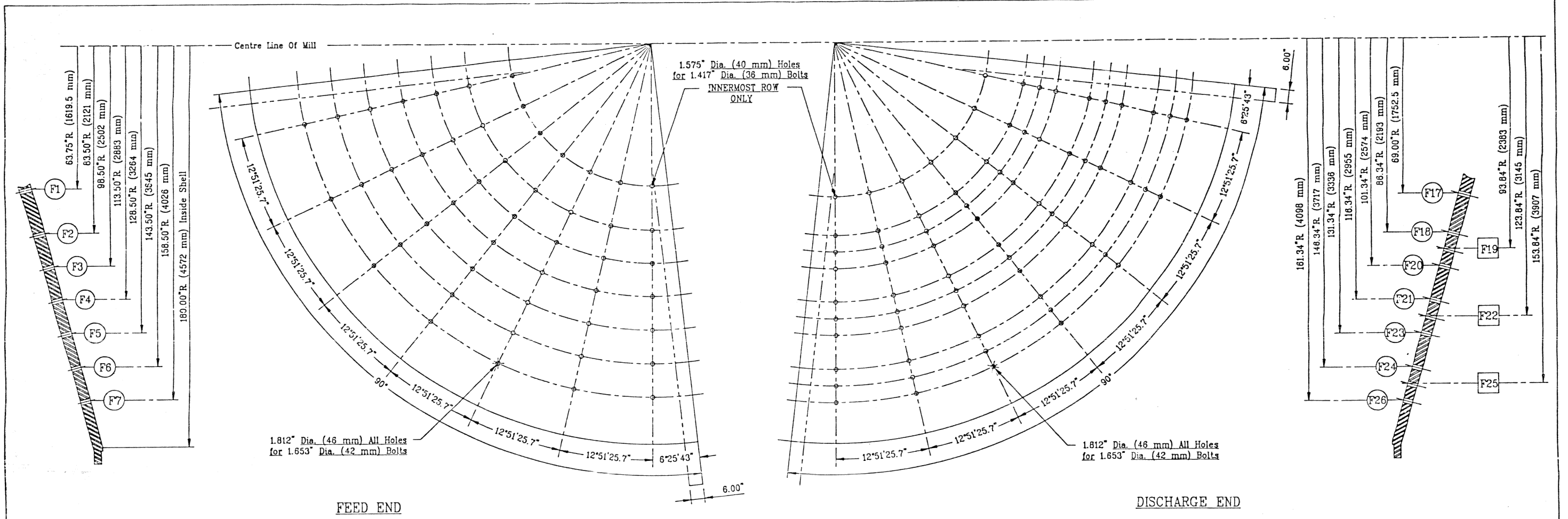
FULLER CO. DWG. NO. 6.704590

Rev.	Date	Sign.	Rev.	Date	Sign.

GEOMETRIC SYMBOLS	Angularity	MILL LINER ORIENTATION -
Flatness	Symmetry	Right Hand (Clockwise) - Left Hand (Counter Clockwise) Rotation
Perpendicularity	True Position	INDUSTRY STANDARD - Looking at DISCHARGE END of MILL from OUTSIDE
Parallelism	Concentricity	AS CAST TOL - UNLESS OTHERWISE SPECIFIED - Dim. in INCHES (") - in MILLIMETERS (mm)
	Roundness	0" - 17.75" (0 mm - 450 mm) ±.045" (1.5 mm) Surface Finish 2000
UNLESS OTHERWISE SPECIFIED - STD. DIM. TOL.		
1 Place Dec. 00.0 ± .130" (3mm)		
2 Place Dec. 0.00 ± .070" (1.5 mm)		
3 Place Dec. .000 ± .040" (1 mm)		
over 17.75" - 36.00" (450 mm - 940 mm) ±.130" (3 mm)		
over 36.00" - 64.00" (940 mm - 1,370 mm) ±.200" (5 mm) All Holes ±.040" ±.000" (+1 mm - 0 mm)		
Holes 1.30" - .250" (3 mm - 6 mm) ±.010" (3 mm)		
Break All Corners .13" x 45° Chamf. or R (3 mm.)		
Angle Tol ± 1'		



Customer	Customer Project	Division of
FULLER CO. / Kumtor Project		TRITECH PRECISION INC.
1716591 & Fuller Modifications		HEAD OFFICE - Toronto, Ontario
		FOUNDERY - Montreal, Quebec
		Scale 1:20
		DWG. NO. 1655 - 1
		Sheet no. Of 133



CERTIFIED FOR CONSTRUCTION
 FULLER MINERAL BETHLEHEM PA
 DATE FEB 01 1996



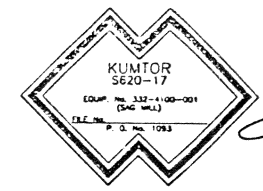
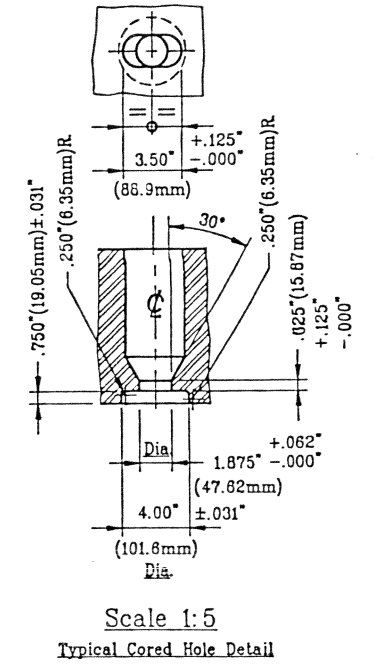
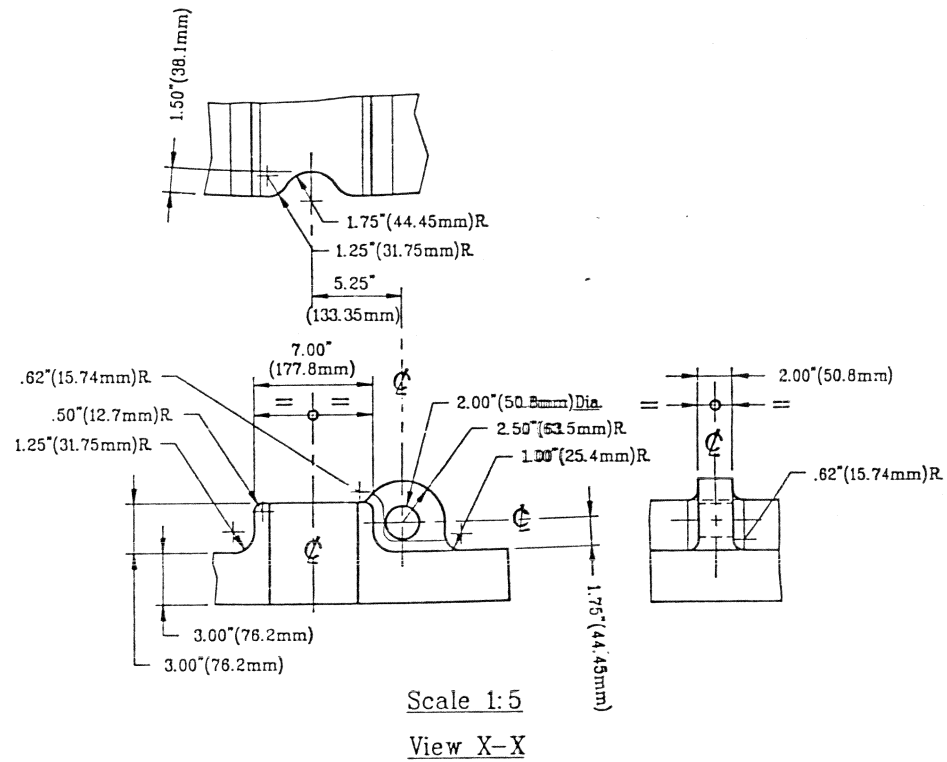
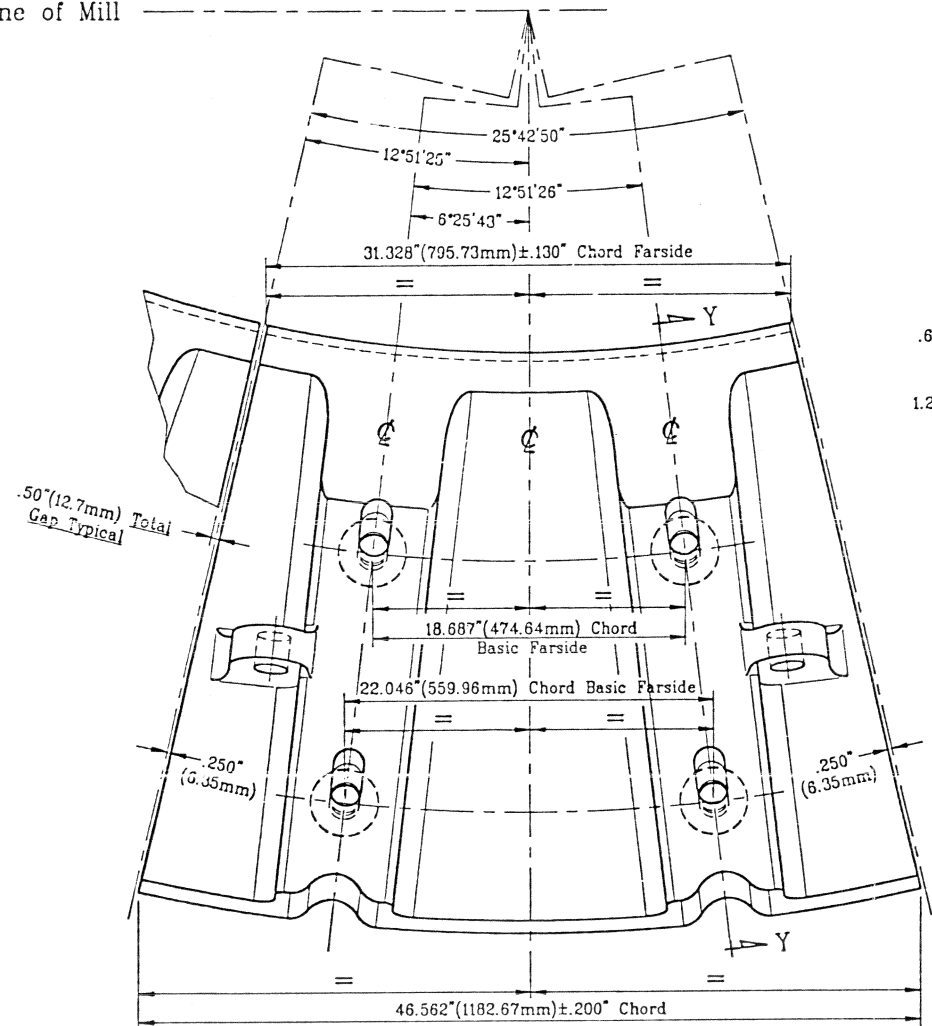
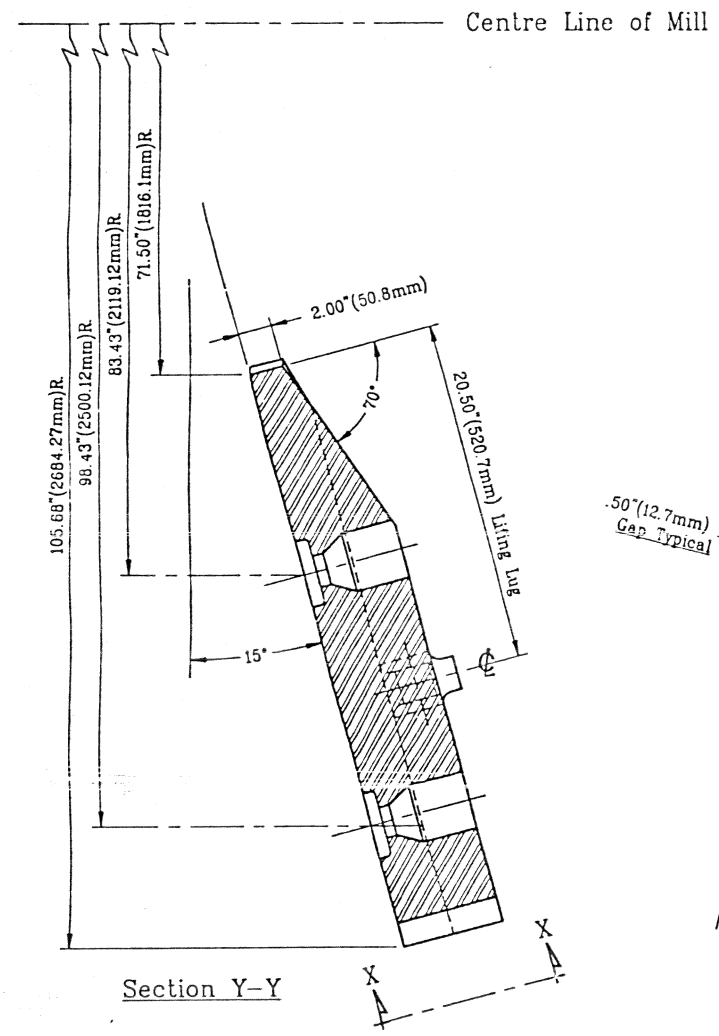
APPROVED DRAWING
 FOR MANUFACTURING
 DATE JAN 31 1995
 SIGNATURE *[Signature]*

SHELL LINER SEGMENT

Item	Description	Pattern No.	Quantity	Wt./Pa.	Material
Title Hole Layouts for Feed End/Discharge End & Shell of Mill for 30'-0" (9144.00mm) Dia. x 14'-0" (4267.3mm) E.G.L. - SAG MILL					
Customer FULLER CO. / Kumtor Project					
Ref. 1.716581 & Fuller Modifications					norcast Division of TRITECH PRECISION INC. 2515 HWY. 7 - Toronto, Ontario FOUNDED - 1984
These drawings are confidential and subject to Copyright and shall not be copied nor reproduced in any form without prior permission of Copyright Owner, NORCAST, Toronto.					
SCALE 1:20					DWG. NO. 1655 - 0 Sheet 1 of 9
DATE BY Val Terek DATE 3.29.95 CHECKED BY DATE					

Rev.	Date	Sign.	Rev.	Date	Sign.
E	1.22.98	W.T.	B	4.20.95	W.T.
D	5.08.95	W.T.	A	4.07.95	W.T.
				03.30.95	W.T.

FULLER CO. DWG. NO. 6.704591 Sheet 1 of 10



CERTIFIED FOR CONSTRUCTION
FULLER MINERAL BETHLEHEM PA
DATE: FEB 01 1996
SIGNATURE: [Signature]

APPROVED DRAWING FOR MANUFACTURING
DATE: JAN 31 1996
SIGNATURE: [Signature]

NOTE :- For Manufacturing, Use Inches & Inch Tol.

Item	Description	Pattern No.	Quantity	U./P.	Material
1	Inner End Liner	1855-2-01	14/End	1,500 Lb. (681.8 kg)	Norsteel 8Y 325-375 BHN (Cr Moly Steel)

Title: Inner End Liner - Detail for 30'-0" (9144.00mm) Dia. x 14'-0" (4267.3mm) E.G.L. - SAG MILL	
Customer: FULLER CO. / Kuntor Project	
Rev. 1	1.716581 & Fuller Modifications & # 1855-0 Dwg.
These drawings are confidential and subject to Copyright and shall not be copied nor reproduced in any form without prior permission of Copyright Owner, NORCAST, Toronto.	
SCALE: 1:5	DRW. NO. 1655 - 2
DATE: 04.04.95	Sheet no. of 3ss

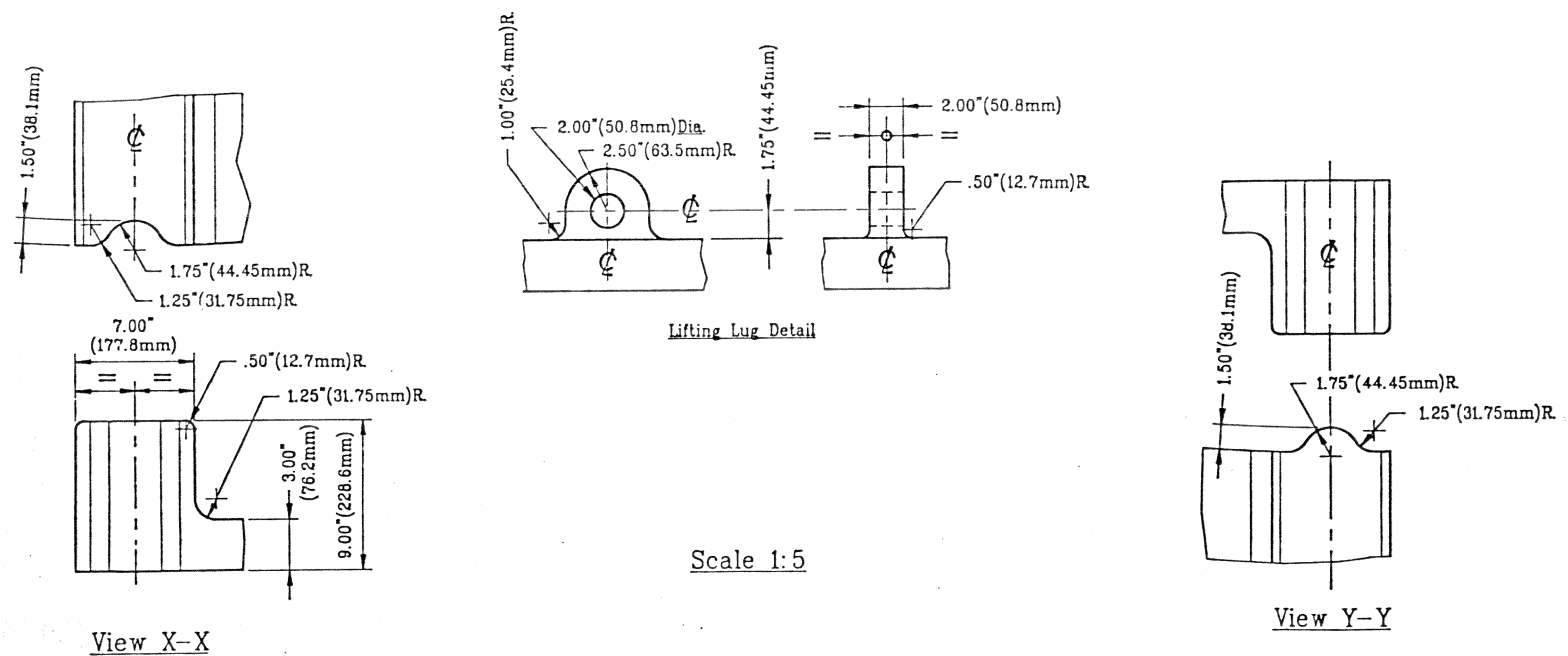
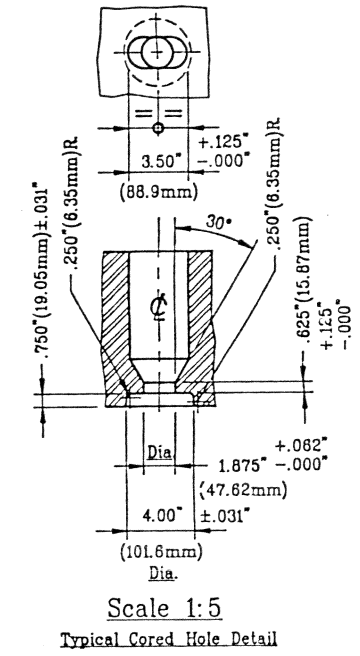
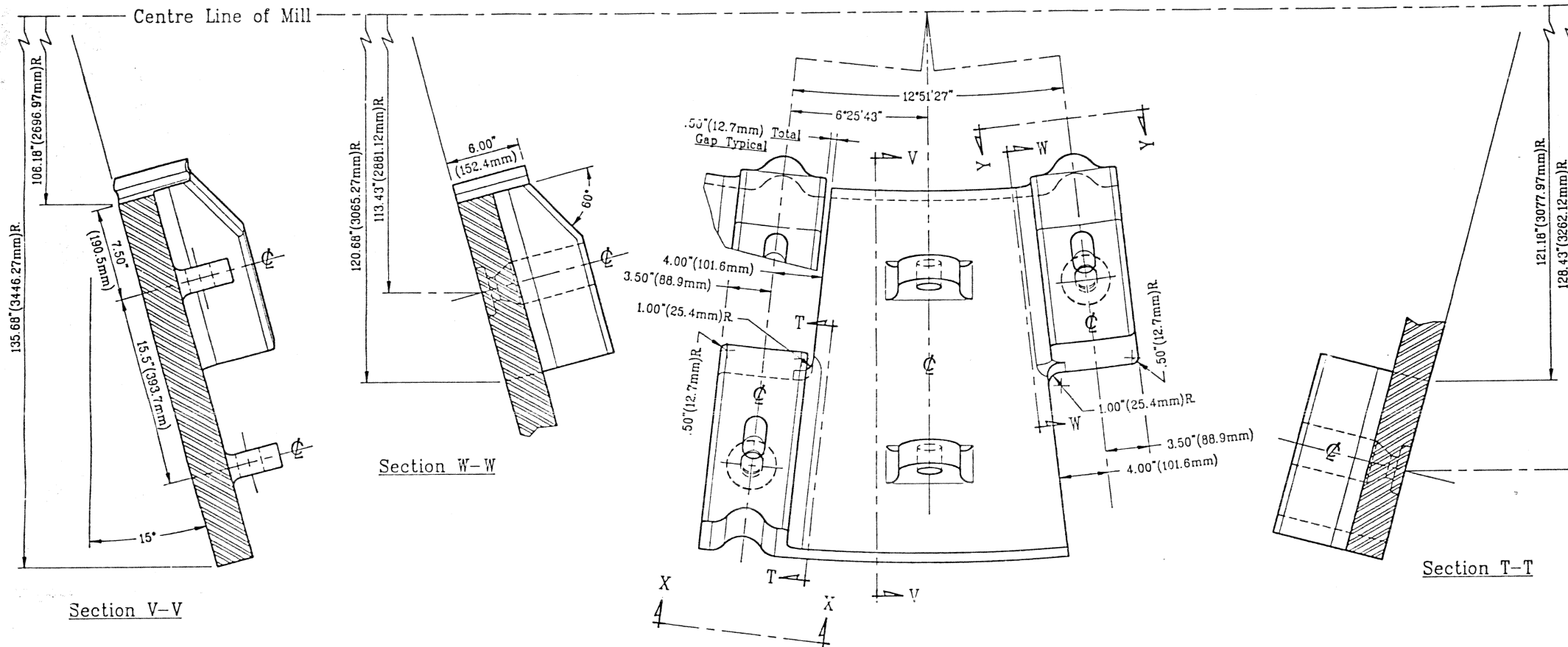
FULLER CO. DWG NO. 6.704591 Sheet 2 of 10

GEOMETRIC SYMBOLS: Angularity, Flatness, Straightness, Perpendicularity, Parallelism, Roundness.

MILL LINER ORIENTATION: Right Hand (Clockwise) - Left Hand (Counter Clockwise) Relation (INDUSTRY STANDARD - Looking at DISCHARGE END of MILL from OUTSIDE).

AS CAST TOL - UNLESS OTHERWISE SPECIFIED - Dim. in INCHES (") - in MILLIMETERS (mm):
 0° - 17.75" (0 mm - 450 mm) ± .065" (1.5 mm) Surface Finish 2000
 over 17.75" - 38.00" (450 mm - 940 mm) ± .130" (3 mm)
 over 38.00" - 54.00" (940 mm - 1370 mm) ± .200" (5 mm) All Holes + .040" - .000" (+1 mm - 0.0 mm) @ to Basic .130" (3 mm)
 Fillets .130" - .250"R (3 mm - 6 mmR)
 Break All Corners .15" x 45° Chamf. or R (3 mm) Angle Tol ± 1°

Rev.	Date	Sign.	Rev.	Date	Sign.



CERTIFIED FOR CONSTRUCTION
FULLER MINERAL BETHLEHEM PA
DATE FEB 01 1996

APPROVED DRAWING
FOR MANUFACTURING
DATE JAN 31 1996
SIGNATURE *[Signature]*

NOTE :- For Manufacturing. Use Inches & Inch Tol.

1	Centre End Liner	1655-3-01	28/End	1,020 Lb. (463.6 kg)	Norsteel 8Y 325-375 BHN (Cr Moly Steel)
Item	Description	Pattern No.	Quantity	Wt./Pc.	Material

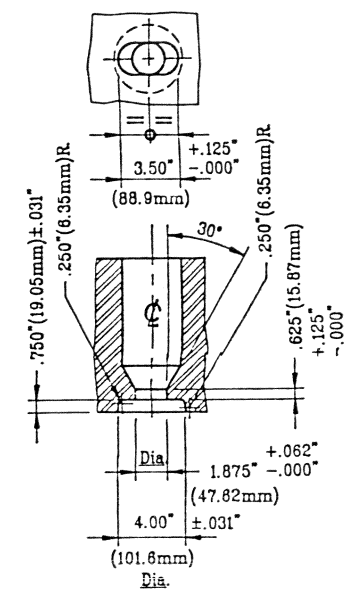
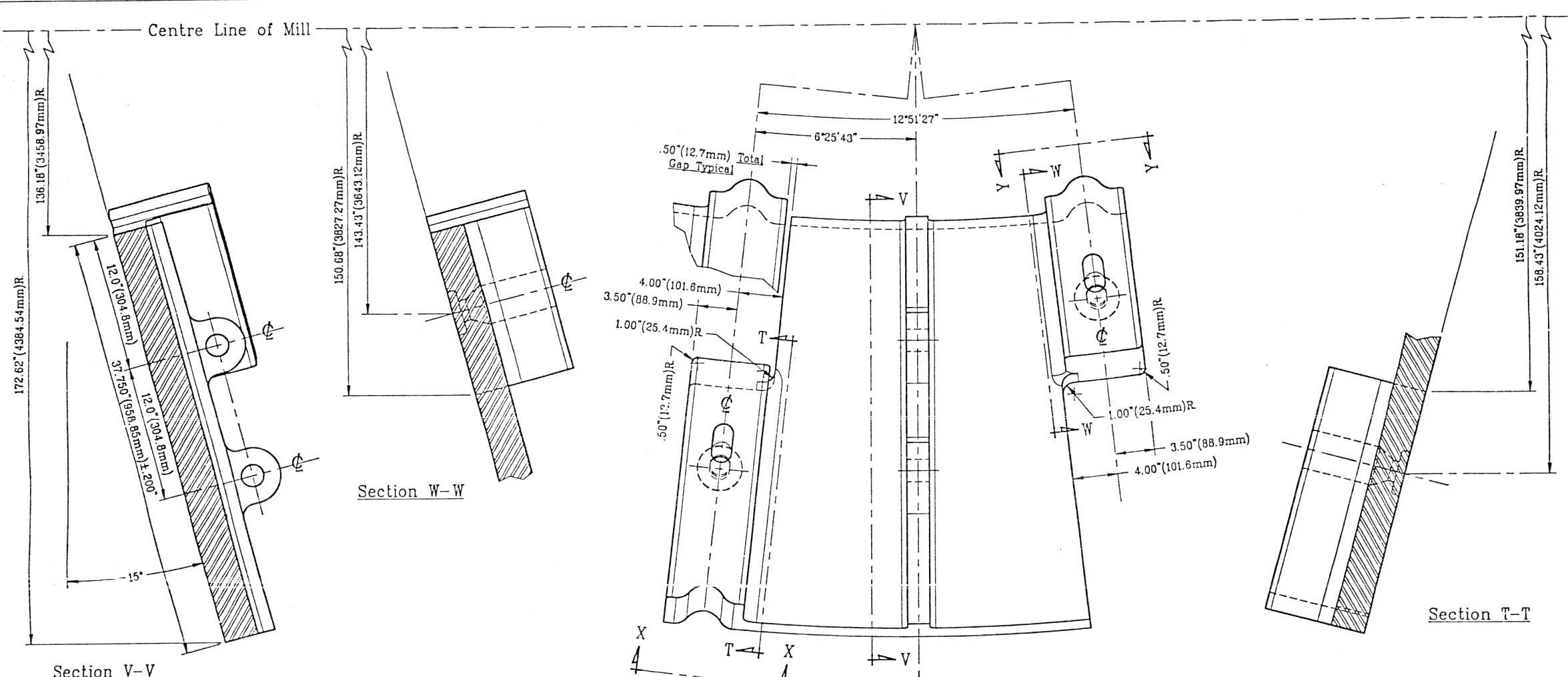
Title Centre End Liner - Detail
for 30'-0" (9144.00mm) Dia. x 14'-0" (4267.3mm) E.G.L. - SAG MILL

FULLER CO. DWG. NO. 6.704591 Sheet 3 of 10

GEOMETRIC SYMBOLS	Angularity	MILL LINER ORIENTATION - Right Hand (Clockwise) - Left Hand (Counter Clockwise) Rotation (INDUSTRY STANDARD :- Looking at DISCHARGE END of MILL from OUTSIDE)
Flatness	Symmetry	AS CAST TOL - UNLESS OTHERWISE SPECIFIED :- Dim. in INCHES (") - in MILLIMETERS (mm)
Straightness	True Position	0" - 17.75" (0 mm - 450 mm) ±.005" (0.127 mm) Surface Finish 200
Perpendicularity	Concentricity	over 17.75" - 56.00" (450 mm - 940 mm) ±.100" (2.54 mm)
Parallelism	Roundness	over 56.00" - 84.00" (940 mm - 1370 mm) ±.200" (5.08 mm) All Holes +.040" - .000" (+1 mm - 0 mm)
UNLESS OTHERWISE SPECIFIED - STD. DIM. TOL.		Files 130" - 280" (3 mm - 8 mm)R 9 to Basic (130" (3 mm)) Angle Tol ± 1°
1 Place Dec. 00.0 ± .130" (3mm)		
2 Place Dec. 0.00 ± .070" (1.5 mm)		
3 Place Dec. .000 ± .040" (1 mm)		

REV. 1	as per Cust. Request	01.22.96	W.T.
	Metric Dim. Adde, Mat'l & Scale Spec. Revised -		
Rev.	Date	Sign.	Rev.

Customer	FULLER CO. / Kumtor Project	Division of	norcast
Rev.	1.718581 & Fuller Modifications & # 1655-0 Dwg.	TRITECH PRECISION INC.	
These drawings are confidential and subject to Copyright and shall Not be copied nor reproduced in any form without prior permission of Copyright Owner, NORCAST, Toronto.		HEAD OFFICE - Toronto, Ontario FOUNDRY - West Jolt, Quebec	
SCALE	1:5	DWG. NO.	1655 - 3
DRWN BY	Vin. Terak	CHECKED BY	
DATE	4.06.95	DATE	
Sheet no.	OF	399	A

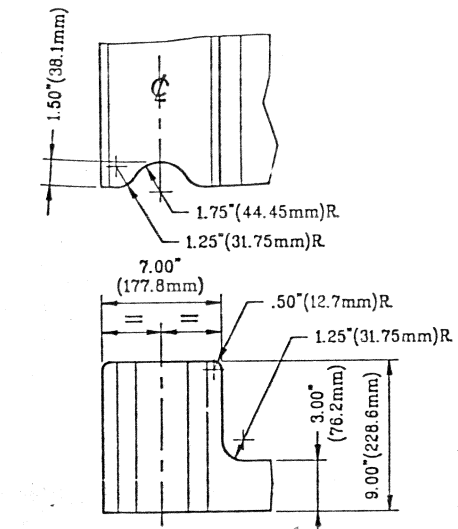


Scale 1:5
Typical Cored Hole Detail

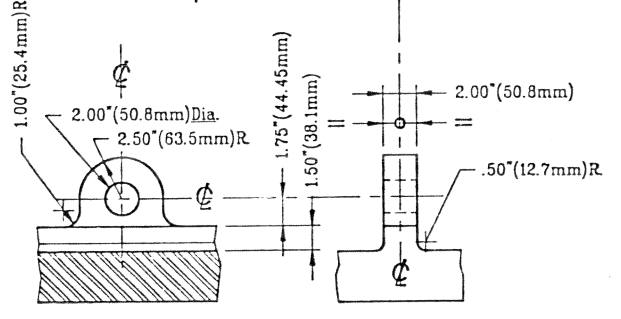
Section W-W

Section T-T

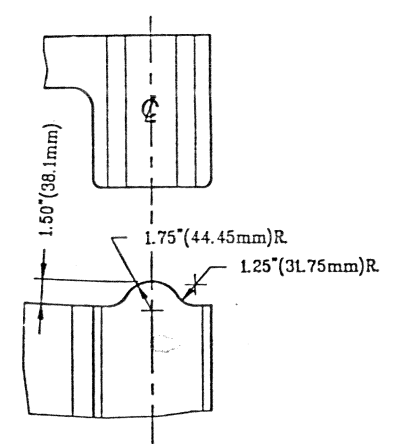
Section V-V



View X-X



Lifting Lug Detail



View Y-Y

Scale 1:5



CERTIFIED FOR CONSTRUCTION
FULLER MINERAL BETHLEHEM PA
DATE: FEB 01 1996
SIGNATURE: [Signature]

APPROVED DRAWING
FOR MANUFACTURING
DATE: JAN 31 1996
SIGNATURE: [Signature]

NOTE :- For Manufacturing, Use Inches & Inch Tol.

1	Outer End Liner	1855-4-01	28/End	1,580 Lb. (709.0 kg)	Norsteel 8Y 325-375 BHM (Cr Moly Steel)
---	-----------------	-----------	--------	-------------------------	---

Title: Outer End Liner - Detail
for 30'-0" (9144.00mm) Dia. x 14'-0" (4267.3mm) E.G.L. - SAG MILL

Customer: FULLER CO. / Kumtor Project

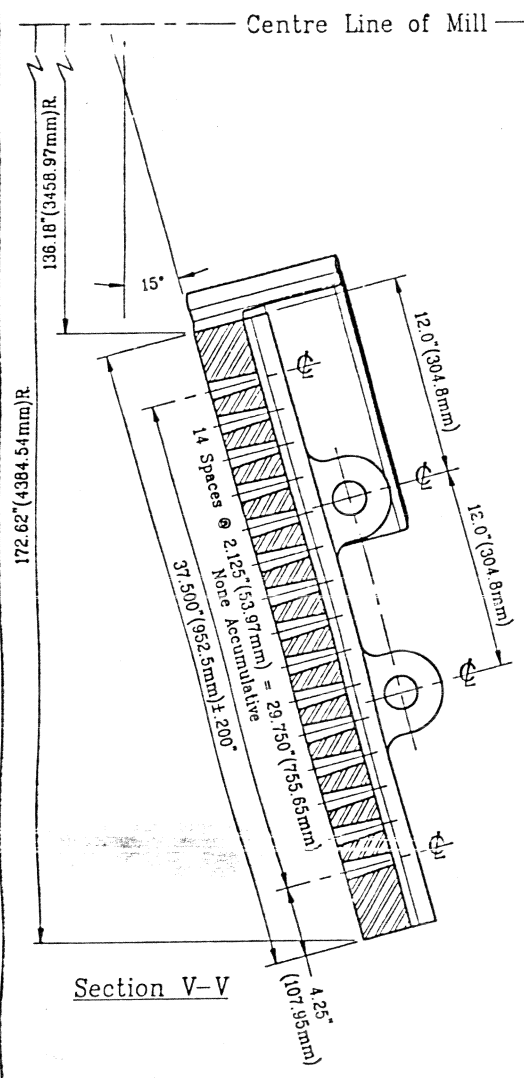
Rev. 1: 1716581 & Fuller Modifications
& # 1655-0 Dwg.

These drawings are confidential and subject to Copyright and shall Not be copied or reproduced in any form without prior permission of Copyright Owner, NORCAST, Toronto.
SCALE 1:5
DWG. NO. 1655-4
Sheet No. Of 355

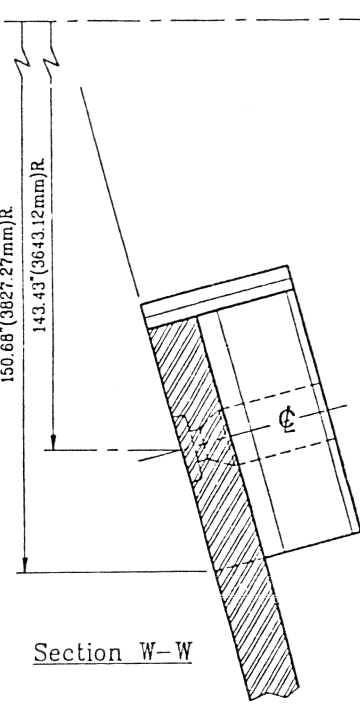
GEOMETRIC SYMBOLS	Angularity	Surface Texture	WILL LINER ORIENTATION - Right Hand (Clockwise) - Left Hand (Counter Clockwise) Relation (INDUSTRY STANDARD) - Looking at DISCHARGE END of MILL from OUTSIDE
Flatness	Symmetry	Surface Finish	AS CAST TOL - UNLESS OTHERWISE SPECIFIED: - Dim. in INCHES (") - in MILLIMETERS (mm)
Straightness	True Position	Surface Finish	0" - 17.75" (0 mm - 450 mm) ± .065" (1.5 mm) Surface Finish 2000
Perpendicularity	Concentricity	Surface Finish	over 17.75" - 36.00" (450 mm - 914 mm) ± .130" (3 mm)
Parallelism	Roundness	Surface Finish	over 36.00" - 54.00" (914 mm - 1370 mm) ± .200" (5 mm)
UNLESS OTHERWISE SPECIFIED - STD. DIM. TOL.		Surface Finish	1 Place Dec. 0.00 ± .130 (3mm)
		Surface Finish	2 Place Dec. 0.00 ± .070 (1.5 mm)
		Surface Finish	3 Place Dec. 0.00 ± .040 (1 mm)
		Surface Finish	Filets: 1.50" - 2.50" R (3 mm - 6 mm R)
		Surface Finish	Break All Corners .15" x 45° Chamf. or R (3 mm)
		Surface Finish	All Holes +.040"-.000" (+1 mm-.0 mm)
		Surface Finish	Angle Tol. ± 1'

FULLER CO. DWG. NO. 6.704591 Sheet 4 of 10

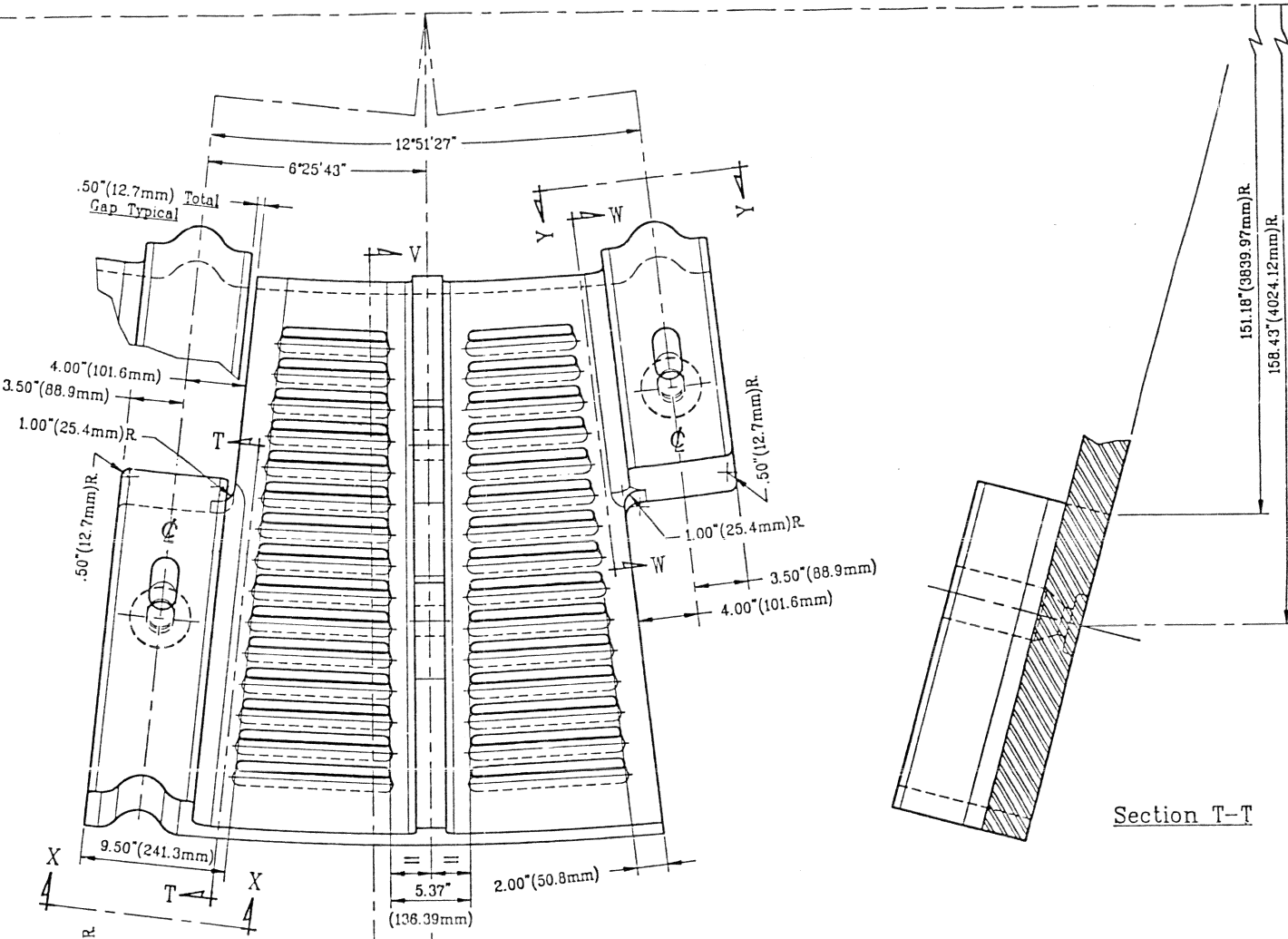
Rev.	Date	Sign.	Rev.	Date	Sign.



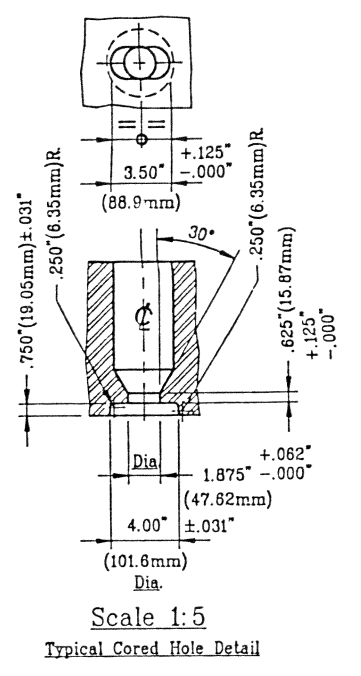
Section V-V



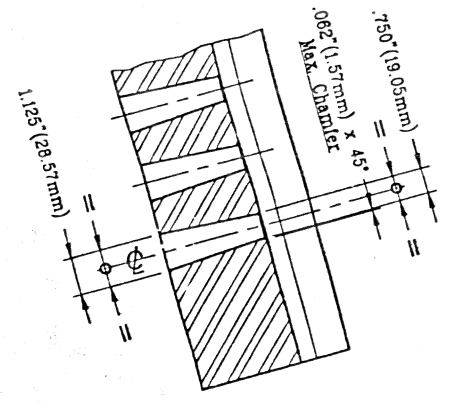
Section W-W



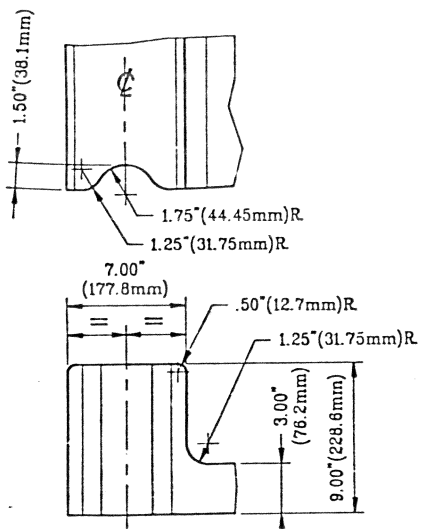
Section T-T



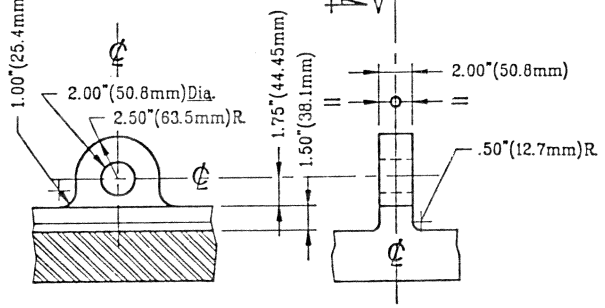
Scale 1:5
Typical Cored Hole Detail



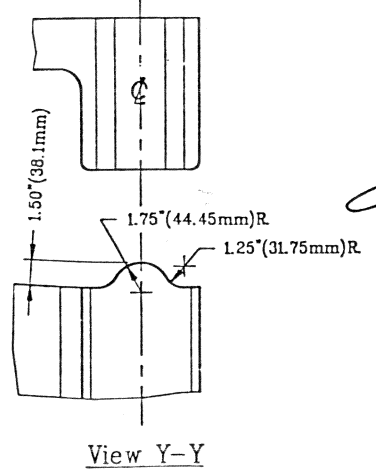
Scale 1:2.5
Grate Slot Detail



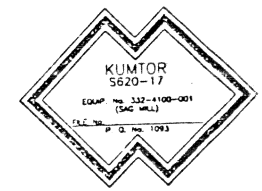
View X-X



Scale 1:5
Lifting Lug Detail



View Y-Y



CERTIFIED FOR CONSTRUCTION
FULLER MINERAL BETHLEHEM PA
DATE FEB 01 1996

APPROVED DRAWING
FOR MANUFACTURING
DATE JAN 31 1996
SIGNATURE *May Hendon*

NOTE :- For Manufacturing, Use Inches & Inch Tol.
Face Side, Open Area 187.25" Sq. (120806.21mm Sq.) per Grate

GEOMETRIC SYMBOLS

Flatness	Angularity	MILL LAYER ORIENTATION -
Straightness	Symmetry	Right Hand (Clockwise) - Left Hand (Counter Clockwise) Rotation
Perpendicularity	True Position	(INDUSTRY STANDARD) - Looking at DISCHARGE END of MILL from OUTSIDE
Parallelism	Concentricity	AS CAST TOL - UNLESS OTHERWISE SPECIFIED: - Dim. in INCHES (") - in MILLIMETERS (mm)
	Roundness	0" - 17.75" (0 mm - 450 mm) ± .085" (1.5 mm) Surface Finish 2000
		over 17.75" - 36.00" (450 mm - 910 mm) ± .130" (3 mm)
		over 36.00" - 54.00" (910 mm - 1370 mm) ± .200" (5 mm) All Holes + .040" - .000" (+1 μm - 0.0 mm)
		Files & .130" - .250" R (3 mm - 8 mm) R ± .200" (5 mm) @ 15 Basic .130" (3 mm)
		Break All Corners .13" x 45° Chamf. or R (3 mm)
		Angle Tol ± 1°

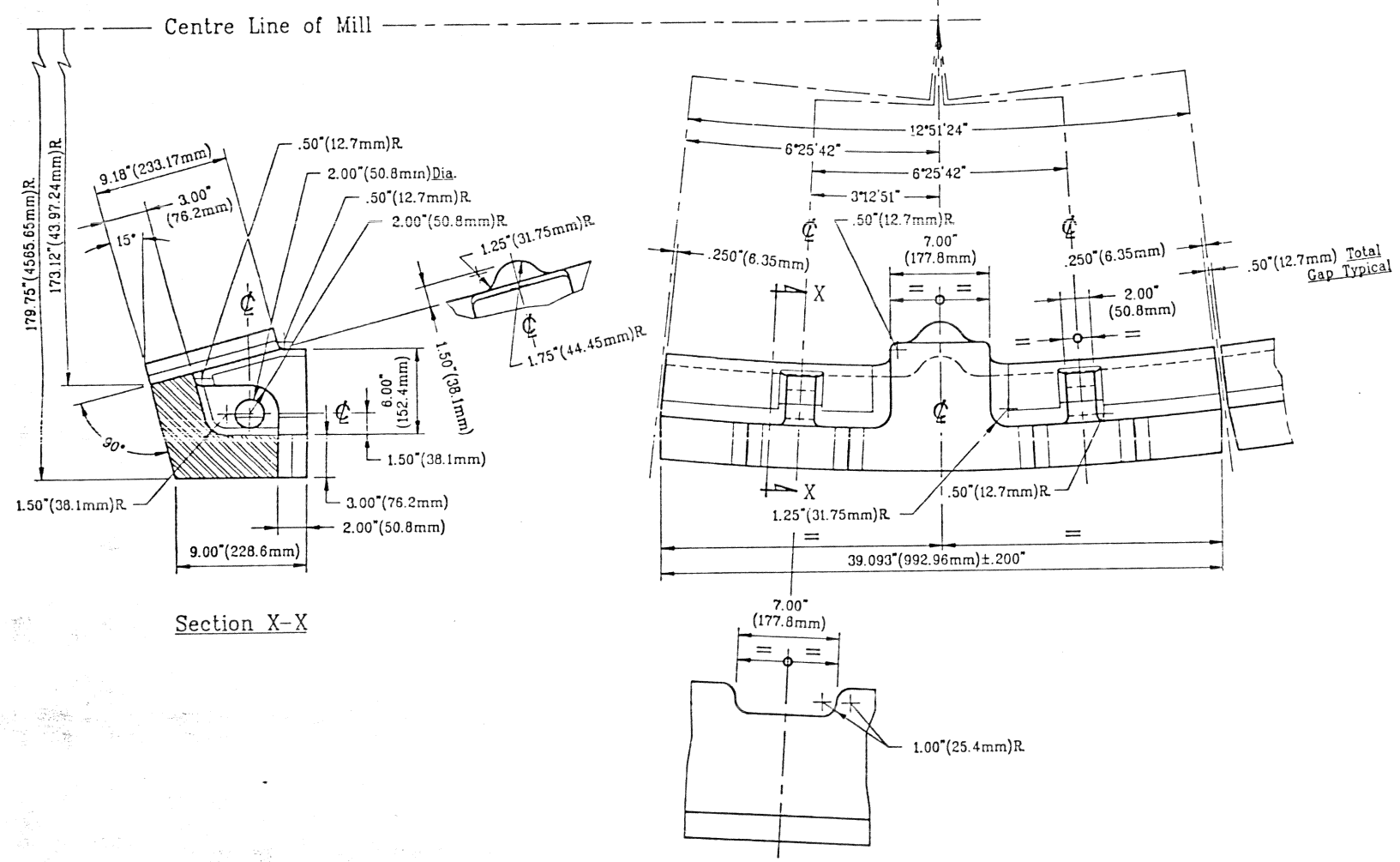
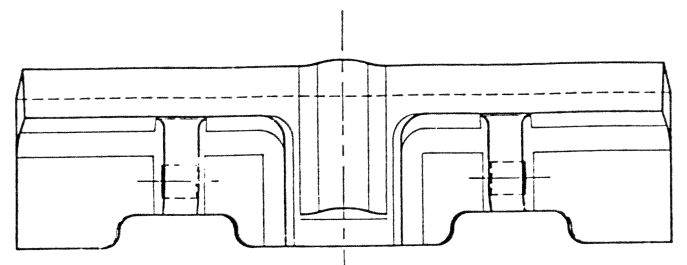
UNLESS OTHERWISE SPECIFIED - STA. DIM. TOL

1 Place Dec. 00.0 ± .130" (3mm)	2 Place Dec. 0.00 ± .070" (1.5 mm)	3 Place Dec. 0.00 ± .040" (1 mm)
---------------------------------	------------------------------------	----------------------------------

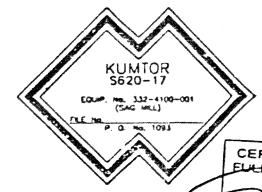
Rev.	Date	Sign.	Rev.	Date	Sign.

FULLER CO. DWG. NO. 6.704591 Sheet 5 of 10

1	Disch. End Outer Grate	1855-5-01	28/End	1,670 Lb. (759.0 kg)	Norsteel 8Y 325-375 BHN (Cr Moly Steel)
Item	Description	Pattern No.	Quantity	Wt./Pc.	Material
Title Discharge End Outer Grate - Detail for 30'-0" (9144.00mm) Dia. x 14'-0" (4267.3mm) E.G.L. - SAG MILL					
Customer FULLER CO. / Kumtor Project					
norcast Division of TRITECH PRECISION INC. HEAD OFFICE - Toronto, Ontario FOUNDRY - Montreal, Quebec					
Rev. 1.716581 & Fuller Modifications & # 1655-0 Dwg.					
These drawings are confidential and subject to Copyright and shall Not be copied nor reproduced in any form without prior permission of Copyright Owner, NORCAST, Toronto.					
SCALE 1:5 / 1:2.5					
Dwg. NO. 1655 - 5					
Rev. 3					
DRAWN BY Wm. Yerek DATE 4.10.95 CHECKED BY DATE					



Section X-X



CERTIFIED FOR CONSTRUCTION
 FULLER CO. - BETHLEHEM PA
 DATE FEB 01 1996
 SIGNATURE *[Signature]*

APPROVED DRAWING
 FOR MANUFACTURING
 DATE JAN 31 1996
 SIGNATURE *[Signature]*

NOTE :- For Manufacturing, Use Inches & Inch Tol.

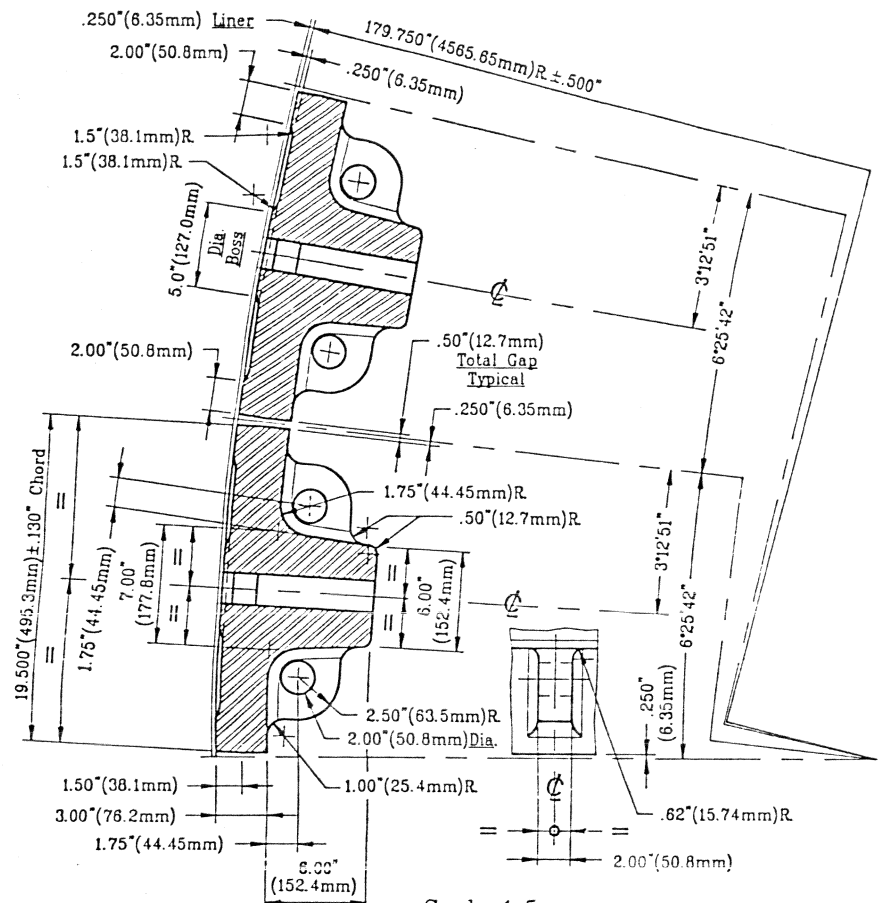
Item	Description	Pattern No.	Quantity	Wt./Pc.	Material
1	Filler Ring Segment	1655-8-01	28/End	545 Lb. (247.7 kg)	Norsteel 8Y 325-375 BHN (Cr Moly Steel)

Division of TRITECH PRECISION INC.
 HEAD OFFICE - Toronto, Ontario
 P.O. BOX 10983 - Mississauga, Ontario
 SCALE 1:5
 DWG. NO. 1655-0-6
 SHEET NO. 06 OF 1399

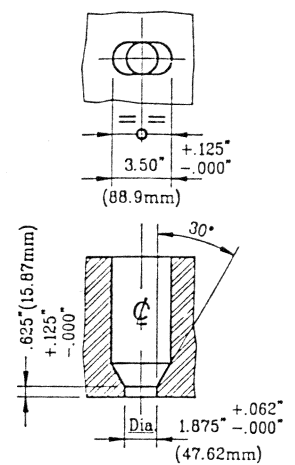
FULLER CO. DWG. NO. 6.704591 Sheet 6 of 10

GEOMETRIC SYMBOLS	Angularity	MILL LAYER ORIENTATION -
Flatness	Symmetry	Right Hand (Clockwise) - Left Hand (Counter Clockwise) Rotation
Straightness	True Position	(INDUSTRY STANDARD) - Looking at DISCHARGE END of MILL from OUTSIDE
Perpendicularity	Concentricity	AS CAST TOL - UNLESS OTHERWISE SPECIFIED: - Dim in INCHES (") - in MILLIMETERS (mm)
Parallelism	Roundness	0" - 17.75" (0 mm - 450 mm) ±.065" (1.5 mm) Surface Finish 2000-
UNLESS OTHERWISE SPECIFIED - STA. DIM. TOL.		
1 Place Dec. 00.0 ± .130 (3mm)		
2 Place Dec. 0.00 ± .070 (1.5 mm)		
3 Place Dec. .000 ± .040 (1 mm)		
over 17.75" - 36.00" (450 mm - 940 mm) ±.130" (3 mm)		
over 36.00" - 84.00" (940 mm - 1370 mm) ±.200" (5 mm) All Holes +.040"-.000" (+1 mm-.0 mm)		
Fillet 130° - 250° R. (3 mm - 8 mm) R. @ to Basic .130" (3 mm)		
Break All Corners .13" x 45° Chamf. or R (3 mm) Angle Tol ± 1°		

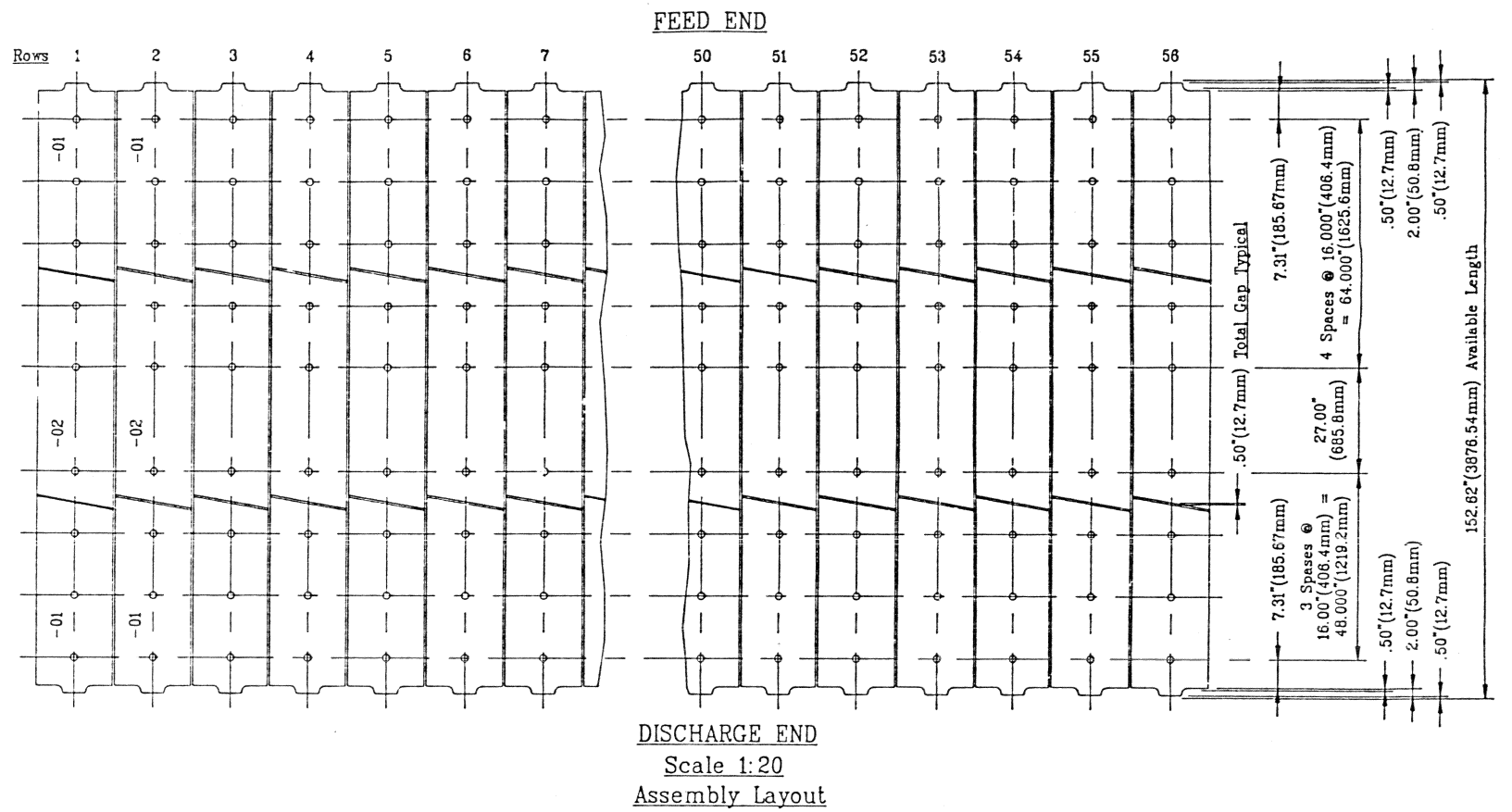
REV.	DATE	BY	CHKD.	APP'D.	REVISIONS
					as per Cust. Request
B	1.19.96	W.T.			Metric Dim. Added Mat'l. & Scale Spec. Revised -
A	7.10.95	W.T.			173.12" R was 1.12" R



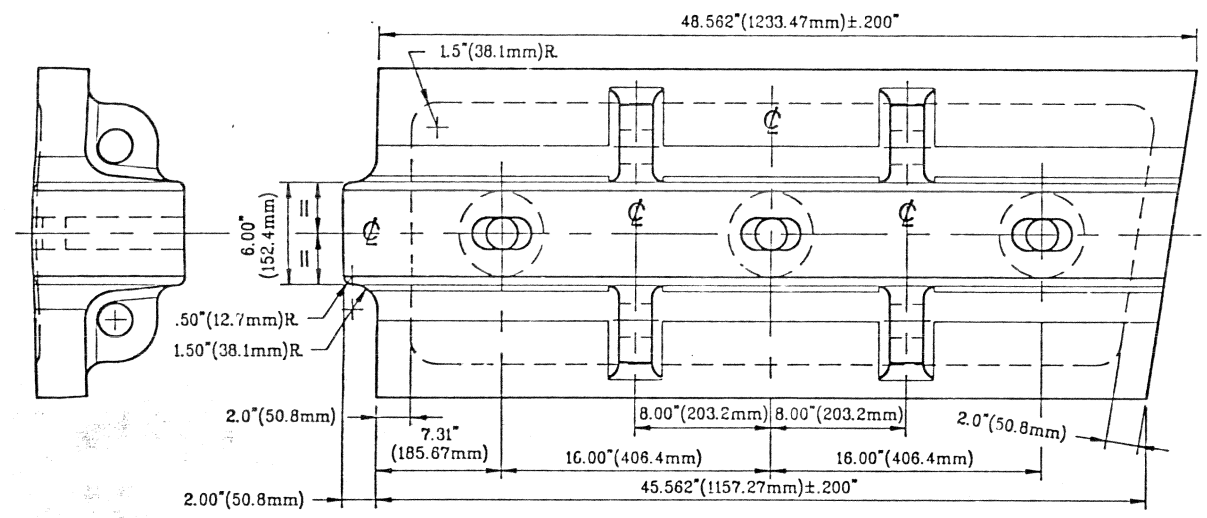
Scale 1:5
Typical Cross Section of Liners Inside Shell



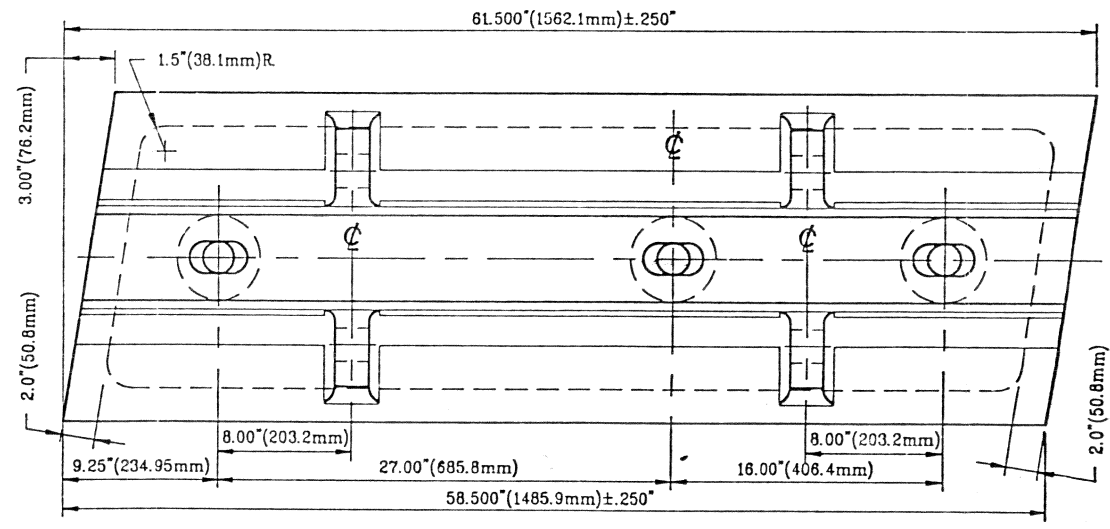
Scale 1:5
Typical Cored Hole Detail



Scale 1:20
Assembly Layout



Scale 1:5



CERTIFIED FOR CONSTRUCTION
FULLER MINERAL BETHLEHEM PA
FEB 0 1 1996

APPROVED DRAWING
FOR MANUFACTURING
JAN 31 1996

NOTE :- For Manufacturing, Use Inches & Inch Tol.

Item	Description	Pattern No.	Quantity	Wt./Pc.	Material
2	Shell Liner Middle	1655-7-02	58/Set	1,565 Lb. (711.4 kg)	Norsteel 8Y 325-375 BHN
1	Shell Liner Ends	1655-7-01	112/Set	1,295 Lb. (588.8 kg)	(Cr Moly Steel)

GEOMETRIC SYMBOLS

Angularity	⊥	WILL LINER ORIENTATION -
Flatness	—	Right Hand (Clockwise) - Left Hand (Counter Clockwise) Rotation
Straightness	—	(INDUSTRY STANDARD - Looking at DISCHARGE END of Mill from OUTSIDE)
Perpendicularity	⊥	AS CAST TOL - UNLESS OTHERWISE SPECIFIED: - Dim. in INCHES (") - in MILLIMETERS (mm)
Parallelism	∥	0" - 17.75" (0 mm - 450 mm) ±.065" (1.5 mm) Surface Finish 2000
Roundness	⊙	over 17.75" - 36.00" (450 mm - 940 mm) ±.130" (3 mm)
UNLESS OTHERWISE SPECIFIED - STD. DIM. TOL.		over 36.00" - 54.00" (940 mm - 1,370 mm) ±.200" (5 mm) All Holes ±.040" - .000" (+1 mm - 0.0 mm)
1 Place Dec. 00.0 ± .130 (3mm)		Fillets 130" - 280" (3 mm - 8 mm R)
2 Place Dec. 0.00 ± .070 (1.5 mm)		Break All Corners .13" x 45° Chamf. or R (3 mm)
3 Place Dec. .000 ± .040 (1 mm)		Angle Tol ± 1'

FULLER CO. DWG. NO. 6.704591 Sheet 7 of 10

Rev.	Date	Sign.	Rev.	Date	Sign.

Customer: FULLER CO. / Kumtor Project

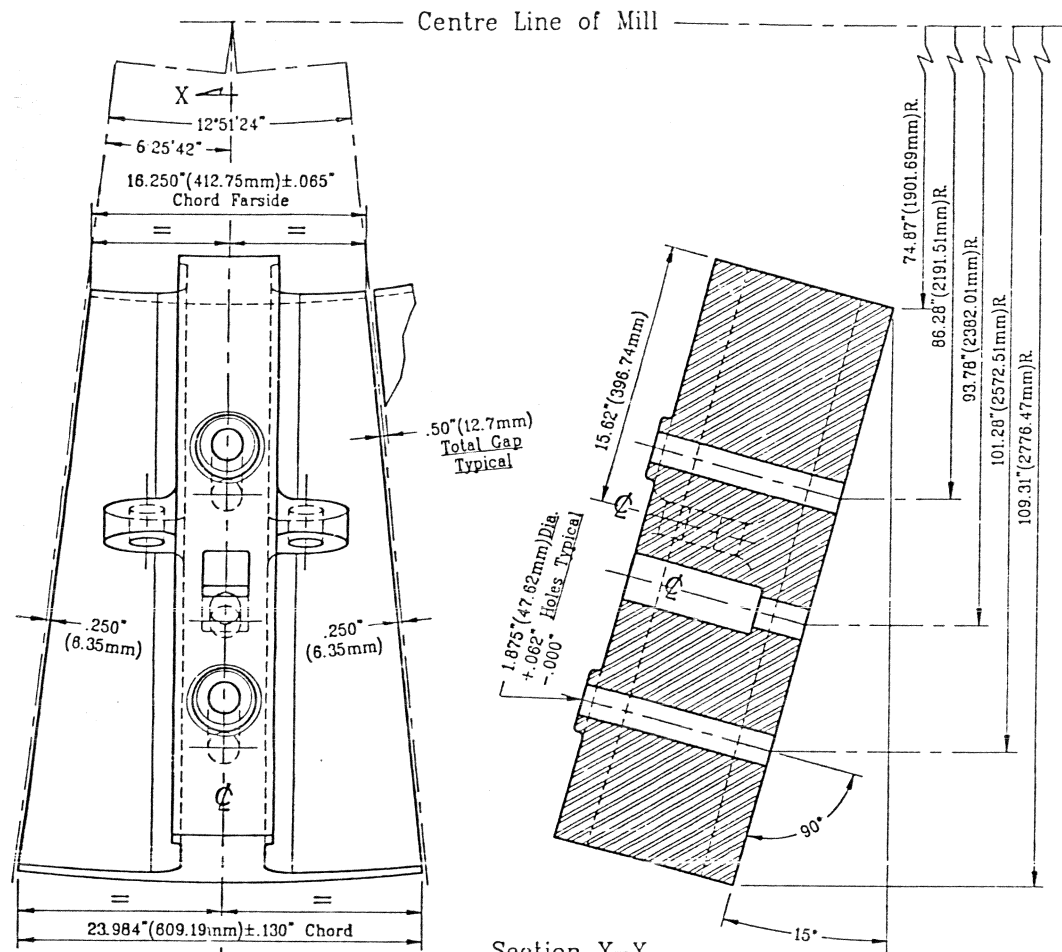
REVISIONS

Rev.	Description	Date	Sign.
1	1.716581 & Fuller Modifications & # 1655-0 Dwg.		

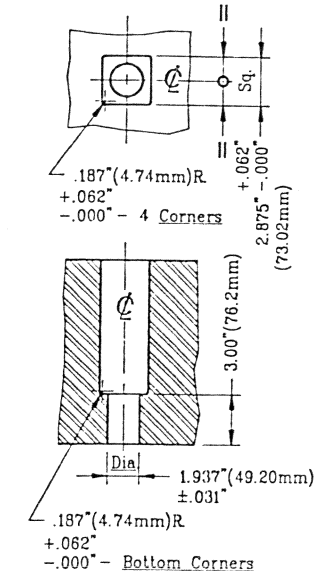
These drawings are confidential and subject to Copyright and shall not be copied nor reproduced in any form without prior permission of Copyright Owner, NORCAST, Toronto.

DRAWN BY: Van Terak DATE: 4.13.95 CHECKED BY: DATE: SHEET NO. OF: 353

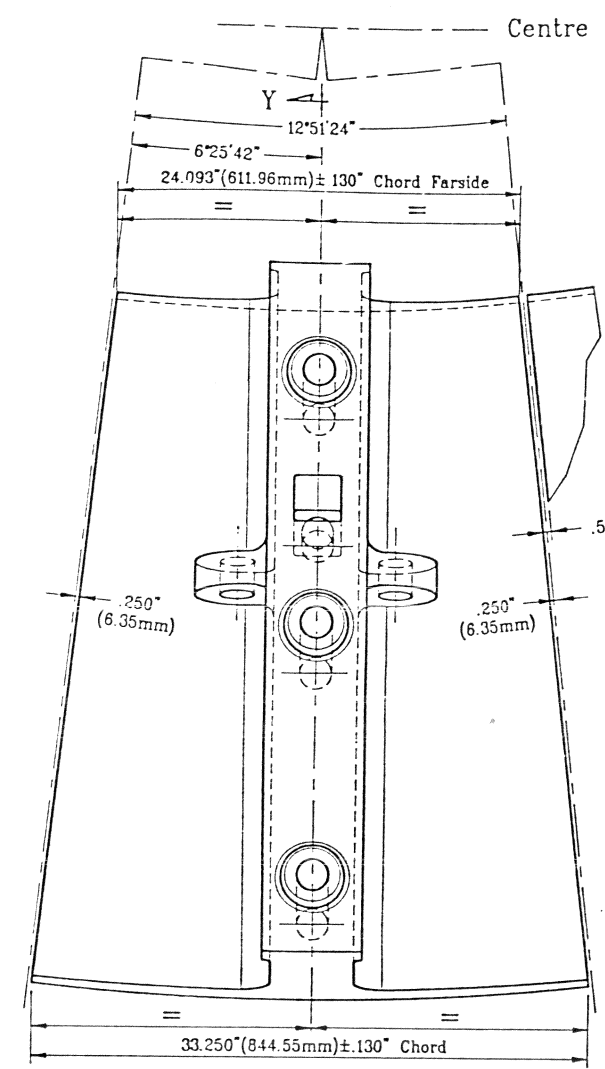
norcast
Division of
TRITCH PRECISION INC.
HEAD OFFICE - Toronto, Ontario
FOUNDRY - West Hill, Quebec
SCALE: 1:20 / 1:5
DWG. NO. 1655 - 7
Rev. 7



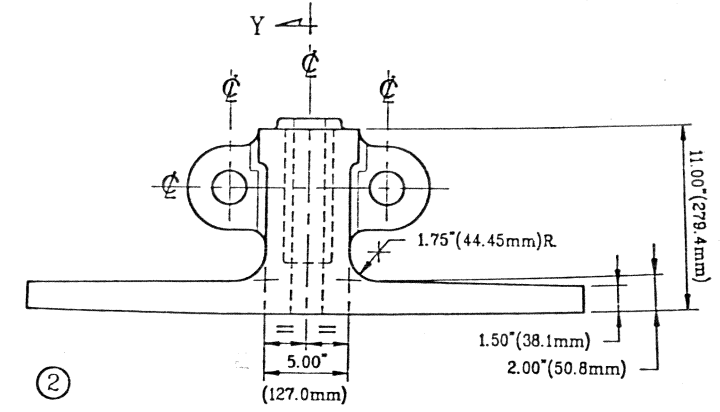
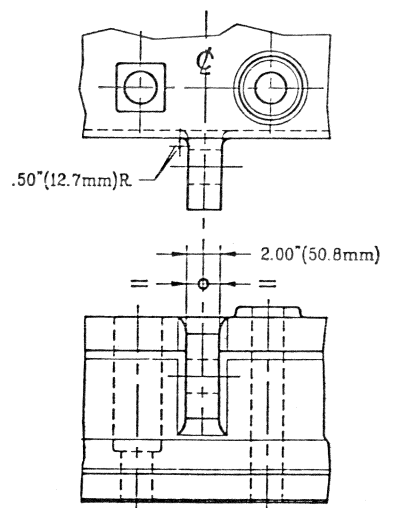
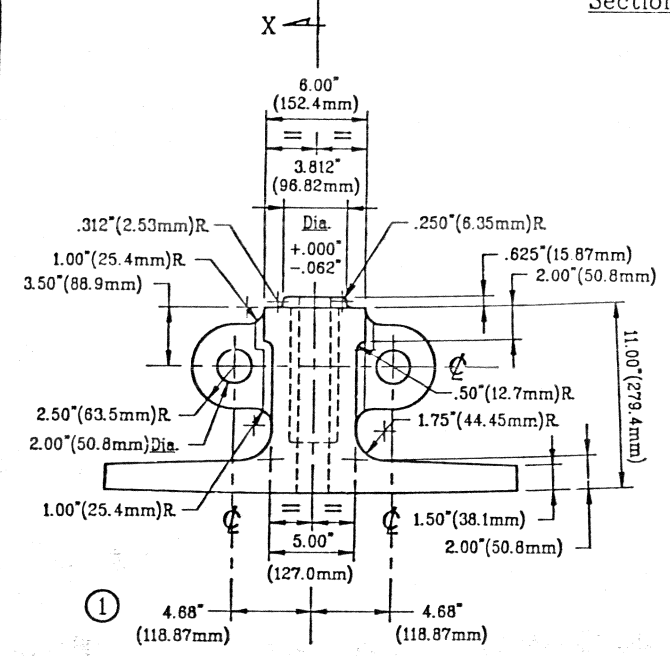
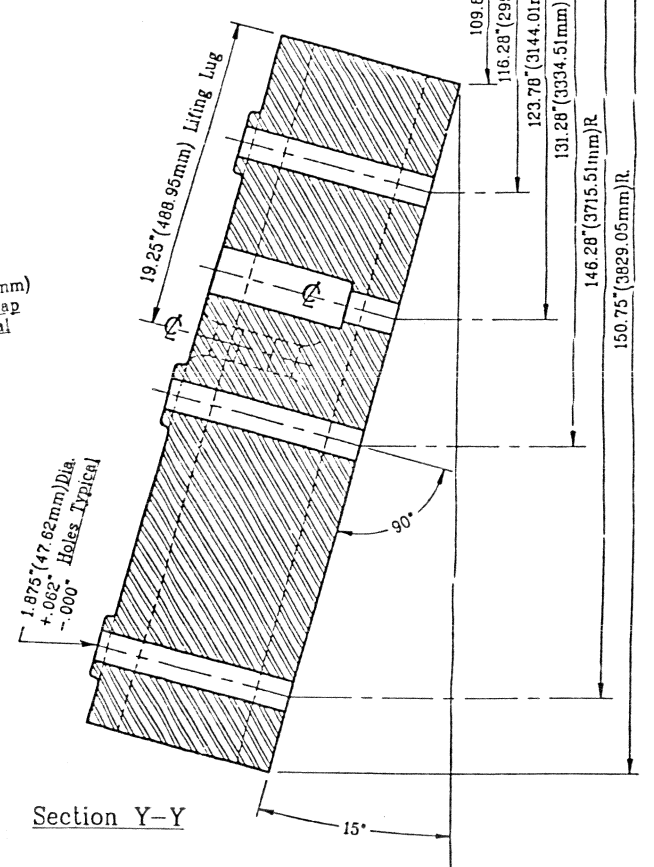
Section X-X



Scale 1:5
Cored Hole for 1.750" (44.45mm) Dia. American Standard Square Headed Bolt



Section Y-Y



KUMTOR
3520-17
EQUIP. 132-4100-001
FEB 01 1996
CERTIFIED FOR CONSTRUCTION
FULLER MINERAL BETHLEHEM PA

APPROVED DRAWING FOR MANUFACTURING
DATE JAN 31 1996
SIGNATURE *[Signature]*

NOTE :- For Manufacturing, Use Inches & Inch Tol.

GEOMETRIC SYMBOLS	Angularity	Surface Texture	MILL LINER ORIENTATION -
Flatness	Symmetry	Surface Finish	Right Hand (Clockwise) - Left Hand (Counter Clockwise) Rotation
Straightness	True Position	Surface Finish	INDUSTRY STANDARD - Looking at DISCHARGE END of MILL from OUTSIDE
Perpendicularity	Concentricity	Surface Finish	AS CAST TOL - UNLESS OTHERWISE SPECIFIED: - Dim. in INCHES (") - in MILLIMETERS (mm)
Parallelism	Roundness	Surface Finish	0" - 17.75" (0 mm - 450 mm) ±.065" (1.5 mm) Surface Finish 2000
UNLESS OTHERWISE SPECIFIED - STD. DIM. TOL.			over 17.75" - 36.00" (450 mm - 914 mm) ±.130" (3 mm)
1 Place Dec. 00.0 ±.130" (3mm)			over 36.00" - 64.00" (914 mm - 1370 mm) ±.200" (5 mm)
2 Place Dec. 0.00 ±.070" (1.5 mm)			Files 130" - 240" (3 mm - 8 mm) R. @ 15° Base 130" (3 mm)
3 Place Dec. .000 ±.040" (1 mm)			Break All Corners .15" x 45° Chamf. or R. (3 mm)
			Angle Tol. ± 1'

FULLER CO. DWG NO. 6.704591 Sheet 8 of 10

Item	Description	Pattern No.	Quantity	Wt./Pc.	Material
2	D.E. Centre Pulp Lifter	1655-8-02	28/End	1,220 Lb. (554.5 kg)	Norsteel 8Y 325-375 BHN (Cr Moly Steel)
1	D.E. Inner Pulp Lifter	1655-8-01	28/End	855 Lb. (388.8 kg)	

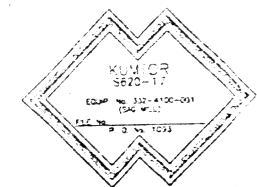
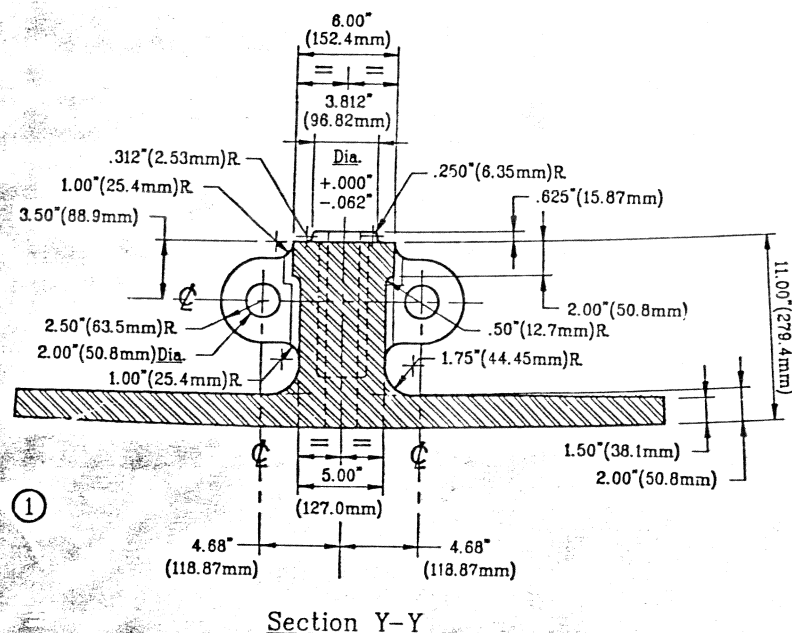
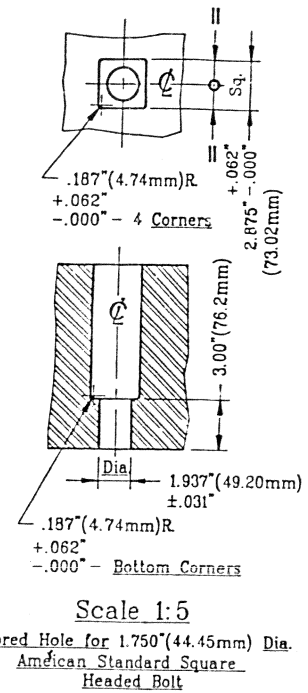
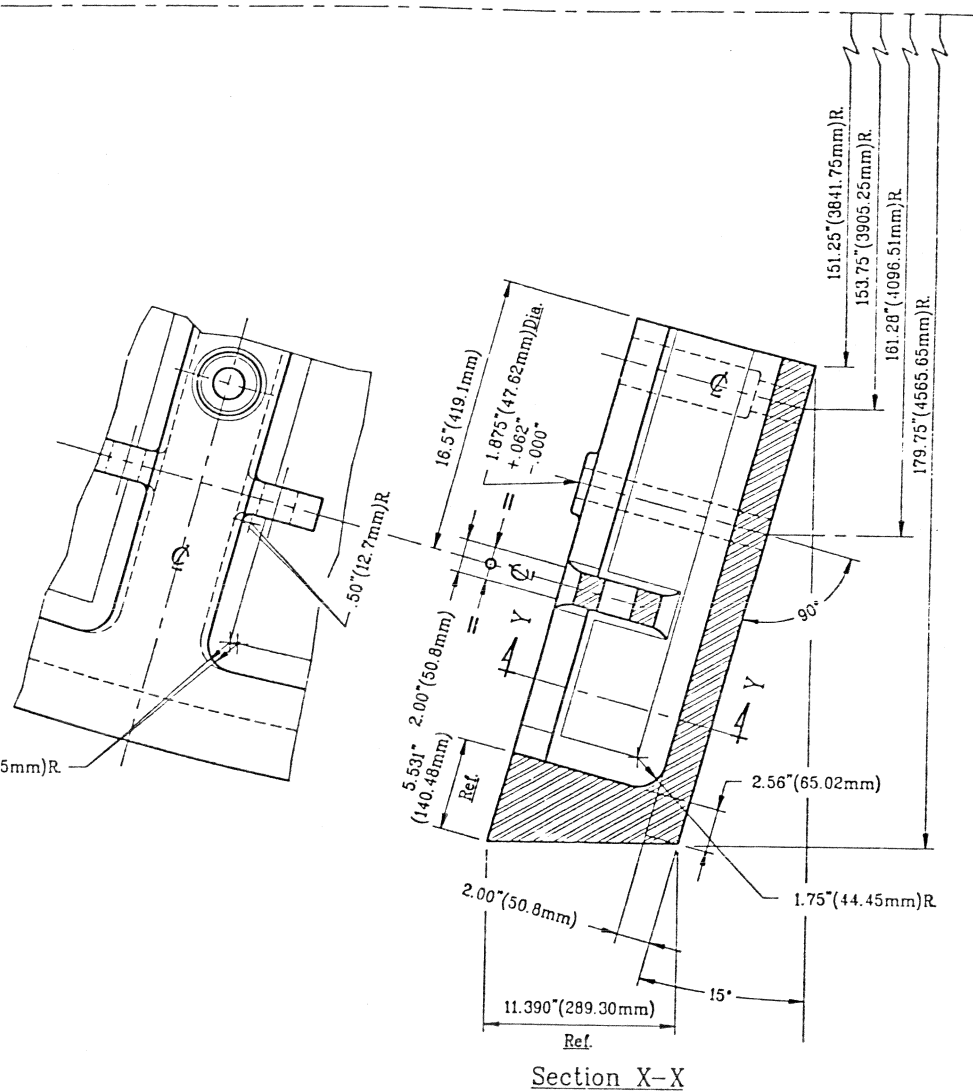
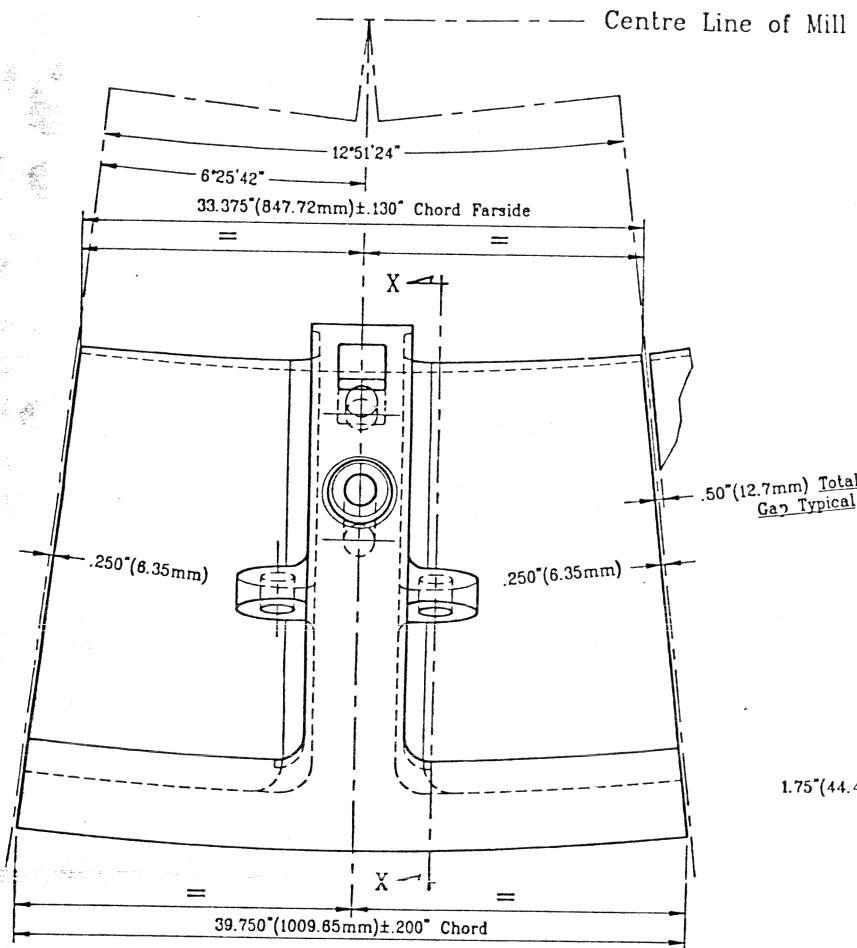
Customer: FULLER CO. / Kumtor Project

REVISIONS

Rev.	Desc.	Date	Sign.
A	11.00" was 14.00" Rad. Revised/ Wt's were 995 &		
B	Met. Dim. Added/ Mat'l & Scale Spec. Revised	1.18.96	W.T.
	1,385 Lb. - Customer Request		
	5.08.95	W.T.	

DRY BY Van Tereck DATE 4.18.95 CHECKED BY DATE

SCALE 1:5
DWC NO. 1655 - 8
Sheet no. OF 333



CERTIFIED FOR CONSTRUCTION
FULLER MINERAL BETHLEHEM PA
DATE: 01/31/96
SIGNATURE: [Signature]

APPROVED DRAWING
FOR MANUFACTURING
DATE: JAN 31 1996
SIGNATURE: [Signature]

NOTE :- For Manufacturing, Use Inches & Inch Tol.

GEOMETRIC SYMBOLS	Angularly Symmetry	MILL LAYER ORIENTATION - Right Hand (Clockwise) - Left Hand (Counter Clockwise) Relation
Flatness	Symmetry	Right Hand (Clockwise) - Left Hand (Counter Clockwise) Relation
Straightness	True Position	INDUSTRY STANDARD - Looking at DISCHARGE END of MILL from OUTSIDE
Perpendicularity	Concentricity	AS CAST TOL - UNLESS OTHERWISE SPECIFIED - - Dia. in INCHES (") - in MILLIMETERS (mm)
Parallelism	Roundness	0 - 17.75" (0 mm - 450 mm) ± .065" (1.5 mm) Surface Finish 2000
UNLESS OTHERWISE SPECIFIED - STD. DIM. TOL.		
1 Place Dec. 00.0 ± .130" (3mm)		
2 Place Dec. 0.00 ± .070" (1.5 mm)		
3 Place Dec. .000 ± .040" (1 mm)		
over 17.75" - 36.00" (450 mm - 940 mm) ± .130" (3 mm)		
over 36.00" - 84.00" (940 mm - 1,370 mm) ± .200" (5 mm)		
Fillet 130" - 260" R. (3 mm - 6 mm) R. All Holes ± .040" - .000" (+1 mm - 0.0 mm)		
Break All Corners .15" x 45° Chamf. or R. (3 mm)		
Angle Tol. ± 1'		

FULLER CO. DWG. NO. 6.704591 Sheet 9 of 10

REV.	REV.	DATE	SIGN.	REV.	DATE	SIGN.
A	11.06			1.18.96	W.T.	
B				5.09.95	W.T.	

Item	Description	Pattern No.	Quantity	Fl./Pc.	Material
1	D.E. Outer Pulp Lifter	1655-9-01	28/Set	1,450 Lb. (659 kg)	Norsteel 8Y 325-375 BHN (Cr Moly Steel)

Title: Discharge End, Outer Pulp Lifter - Detail for 30'-0"(9144.00mm) Dia. x 14'-0"(4267.3mm) E.G.L. - SAG MILL

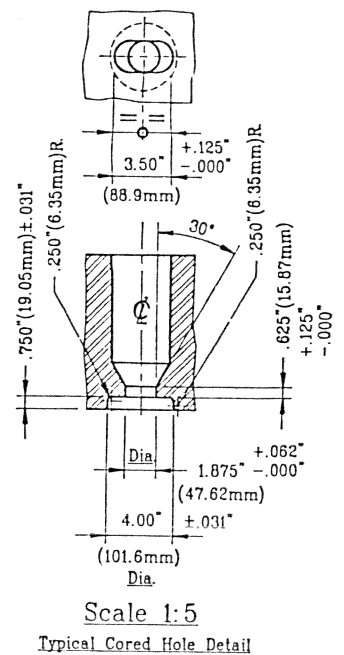
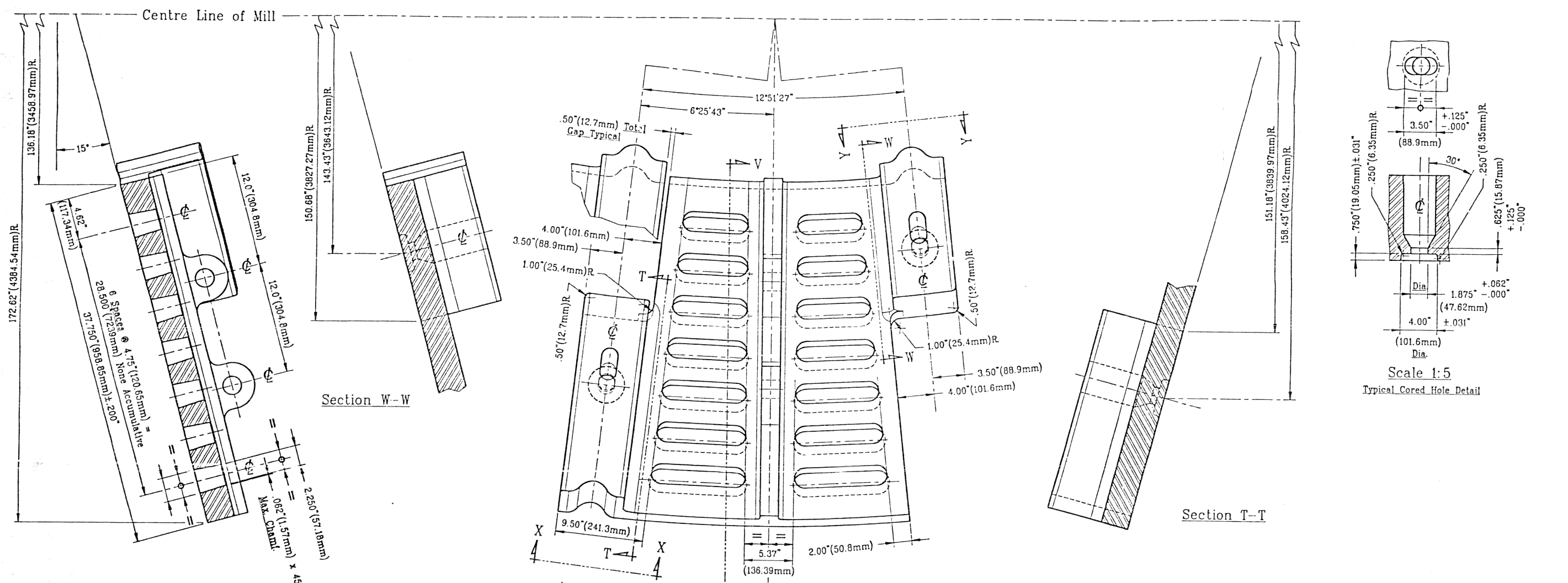
Customer: FULLER CO. / Kumlor Project

norcast Division of TRITECH PRECISION INC. HEAD OFFICE - Toronto, Ontario FOUNDRY - Wood Mill, Quebec

SCALE 1:5

DWG. NO. 1655 - 9

Sheet no. 09 of 353

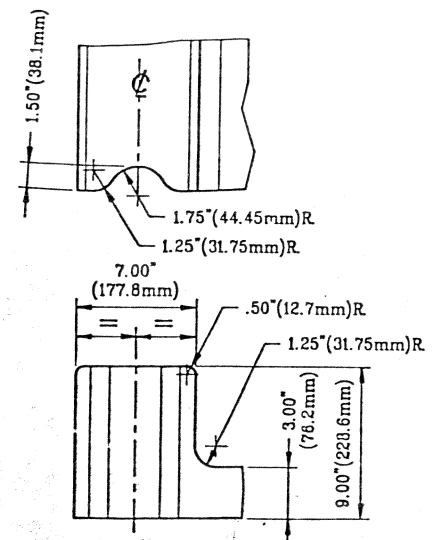


Section V-V

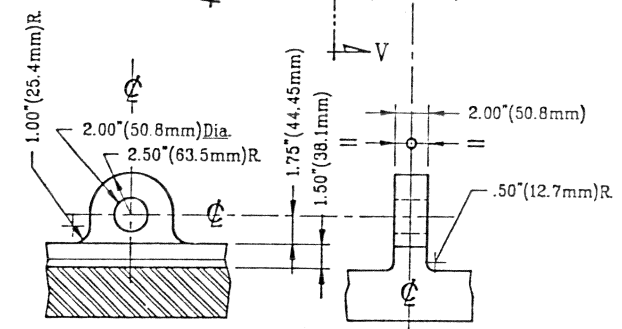
Section W-W

Section T-T

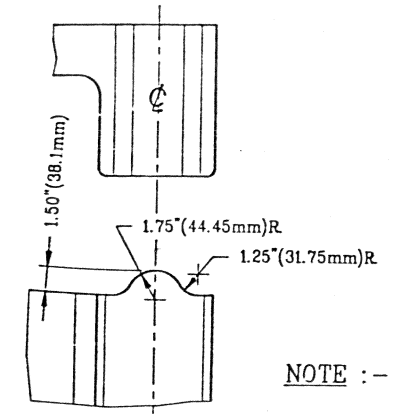
Scale 1:5
Typical Cored Hole Detail



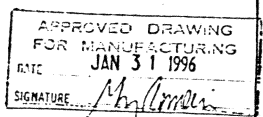
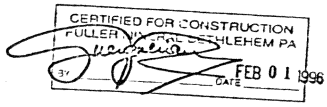
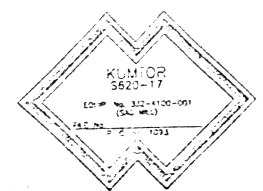
View X-X



Lifting Lug Detail



View Y-Y



NOTE :- For Manufacturing, Use Inches & Inch Tol.
Face Side, Open Area 254.5 Sq. In.(164193 Sq.mm) per Liner

GEOMETRIC SYMBOLS	Angularity	MILL LINER ORIENTATION -
Flatness	Symmetry	Right Hand (Clockwise) - Left Hand (Counter Clockwise) Rotation
Straightness	True Position	INDUSTRY STANDARD - Looking at DISCHARGE END of MILL from OUTSIDE
Perpendicularity	Concentricity	AS CAST TOL. - UNLESS OTHERWISE SPECIFIED - Dim. in INCHES (") - in MILLIMETERS (mm)
Parallelism	Roundness	over 17.75" - 17.75" (450 mm - 450 mm) ±.005" (1.5 mm) Surface Finish 2000
		over 34.00" - 64.00" (840 mm - 1,370 mm) ±.005" (1.5 mm) Surface Finish 2000
		Fillet's .130" - .260" R (3 mm - 8 mm) R
		Break All Corners .13" x 45° Chamf. or R. (3 mm)
		Angle Tol. ± 1°

Rev.	Detls.	Sign.	Rev.	Date	Sign.
			A		

REV.	Description	Quantity	PL/Pc.	Material
1	D.E. Pebble Port Liner	1855-10-01	28/End	1840 Lb. (745.5 kg) Norsteel 8Y 325-375 BHN (Cr Moly Steel)

Customer: FULLER CO. / Kumtor Project

Division of TRITECH PRECISION INC. HEAD OFFICE - Toronto, Ontario FOUNDRY - Mont-Joli, Quebec

SCALE 1:5

DWG. NO. 1655 - 10

Rev. A

FULLER CO. DWG. NO. 6.704591 Sheet 10 of 10